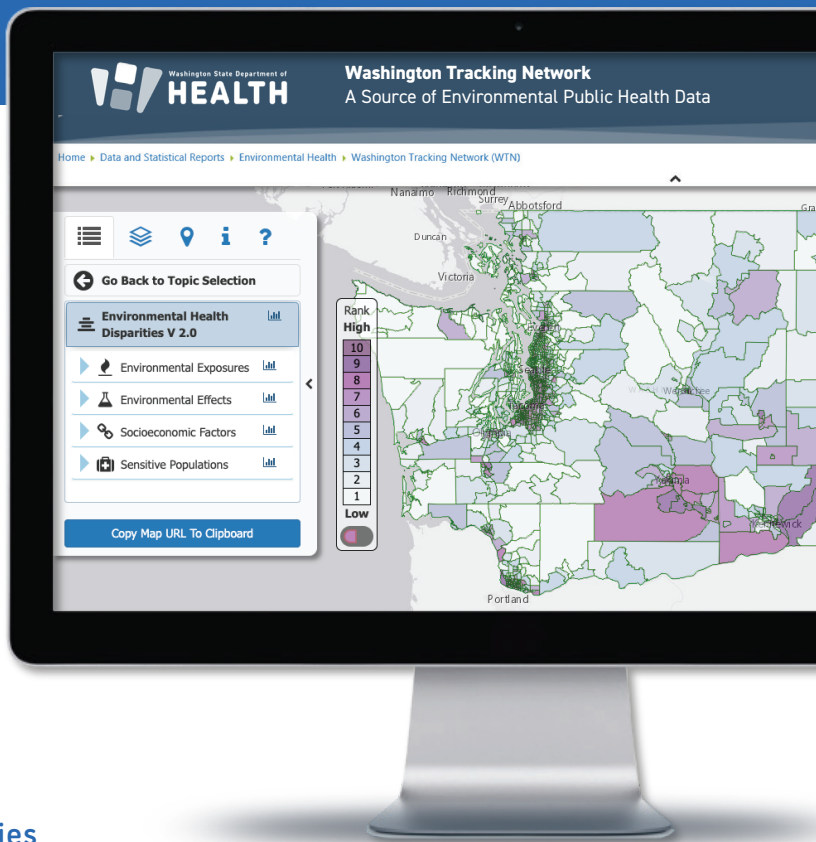


Washington Environmental Health Disparities Map

The Washington Environmental Health Disparities Map is an interactive tool that compares communities across Washington State for environmental health disparities.

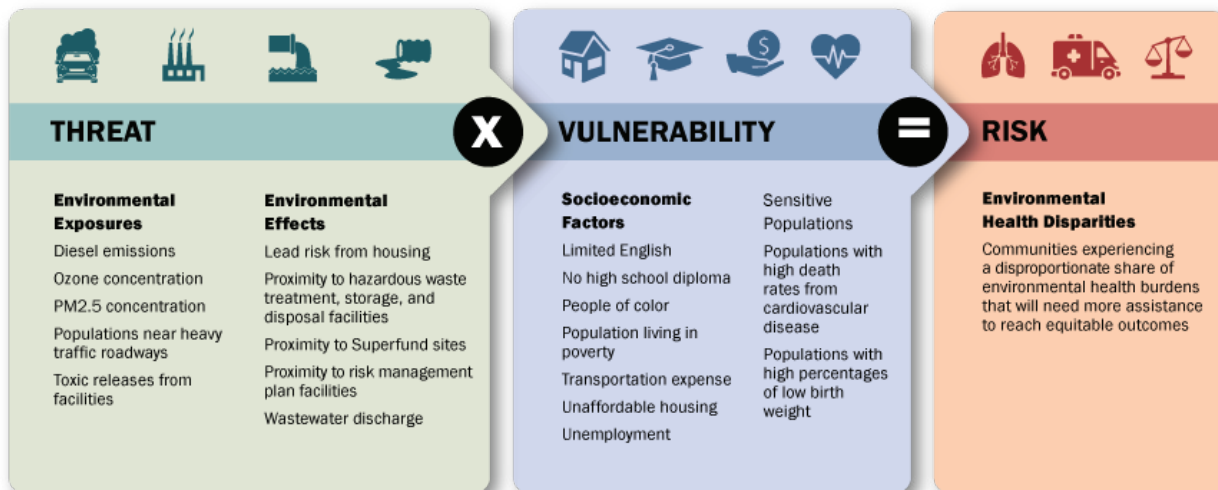
The map is displayed on the Washington Tracking Network's Information by Location mapping tool, which displays relative community rankings by selected health and social factors. Community demographics, including population trends, age/sex, and race/ethnicity data are also presented.

Health disparities are linked to social, environmental, and biologic factors. The EHD map uses a "cumulative impact" model, which reflects the interaction between biologic, social, and environmental factors. The model recognizes that different factors are linked together and don't exist in isolation. A cumulative impact model increases the likelihood that disadvantaged communities receive critical attention.



Washington Environmental Health Disparities

Threat x Vulnerability = Risk



Insight through Visualization

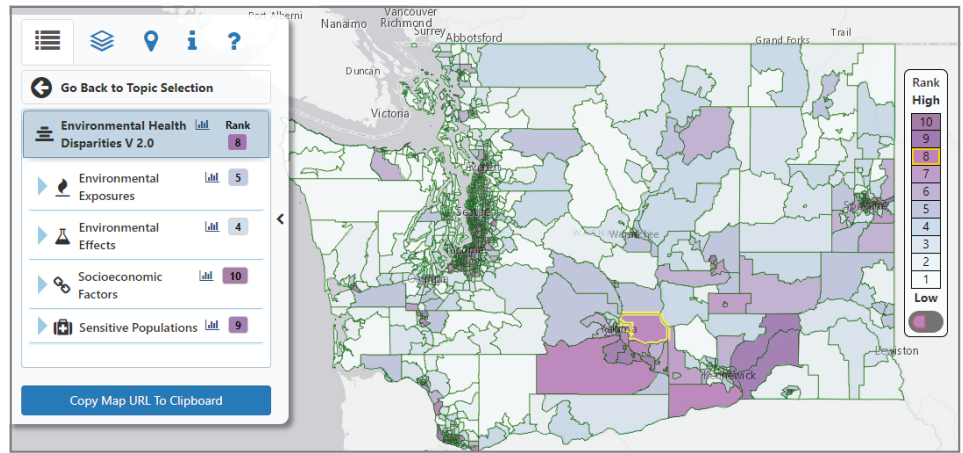
Communities, government agencies, academia, and other partners use the map to compare and visualize how pollution affects the well-being of some of the state's most impacted communities.

The map provides new and rigorous insights into where public investments can be prioritized to buffer environmental health impacts on Washington's communities, so that everyone can benefit from clean air, clean water, and a healthy environment.

The map is currently being used to make data-driven decisions at multiple levels across the state. Current uses include allocating green energy funding to highly impacted communities, helping communities access grants, and communities advocating for their health and environment.

Community Ranks

The map shows cumulative environmental health impacts at the community level based on 19 indicators. The communities are defined as census tracts. On average census tracts contain about 5,000 people but vary in size from about 2,000 to 8,000 people. Communities are compared using a 1–10 ranking scale.



Developed in Partnership

The map is the result of two years of collaboration between community organizations, academia and government.

The map was informed by listening sessions in communities disproportionately impacted by environmental hazards across the state. Community members provided key insights into their lived experiences and the environmental health conditions affecting their communities. This input directly guided the development of the map.

'Your zip code, income, race or language ability shouldn't determine how healthy you are. I want clean air for my family and neighbors who suffer from asthma. Children should be able to grow up in a safer, less polluted environment.'

— Rosario Maria Medina

Longtime South Seattle resident
Community organizer for Duwamish River Cleanup Coalition

Moving Forward Together

The EHD map is a living tool; we continue to develop and improve it in an ongoing process, incorporating community feedback and new data. We are happy to hear from you to learn how the map could serve you better. If you have questions, concerns, or feedback on how to improve the EHD map, please let us know.

We are available to consult with you on how to use the map or interpret information on the map, and we encourage you tell us about how you are using the map.

[Email us](mailto:EHDmap@doh.wa.gov) (EHDmap@doh.wa.gov)

[Visit the map website](https://doh.wa.gov/EHDmap) (https://doh.wa.gov/EHDmap)



DOH 334-426 | June 2024

To request this document in another format, call 1-800-525-0127. Deaf or hard of hearing customers, please call 711 (Washington Relay) or email civil.rights@doh.wa.gov.



**ENVIRONMENTAL
& OCCUPATIONAL
HEALTH SCIENCES**
SCHOOL OF PUBLIC HEALTH
UNIVERSITY of WASHINGTON