

2024 Washington State Health Assessment

The Washington State Department of Health (DOH) developed the State Health Assessment to facilitate strategic thinking about improving health in Washington. Assessment is a core Foundational Public Health Services (FPHS) capability that helps us achieve equitable health outcomes for all.

Our Approach

- Utilize linkages with existing DOH data visualizations and tools.
- Align with indicators identified by local health jurisdiction (LHJ) partners.
- Incorporate the Transformational Plan priority areas to organize the indicators into categories.
- Identify social determinants of health and historical policies and laws that lead to health disparities in five priority areas.
- Support public health partners across Washington with the data they need to build health promotion initiatives.

Our Assessment Tools

The MAPP (Mobilizing for Action through Planning and Partnerships) 2.0 Assessments:

Community Context Assessment

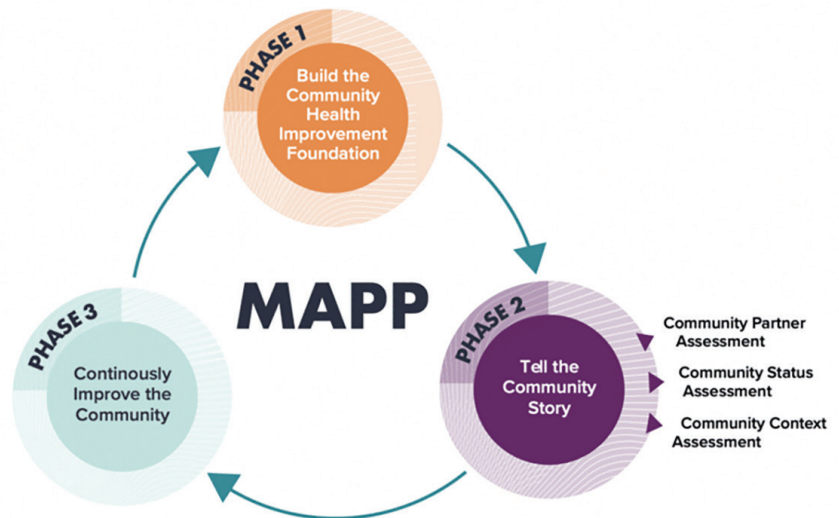
Uses data about partnerships and organizational capacities to assess how the community's lived experience, environment, culture, assets, and unique history explain existing inequities.

Community Status Assessment

Assesses the status of a community using quantitative data, including demographics, health status, social determinants of health (SDOH), health equity indicators, and across all these variables, existing inequities.

Community Partner Assessment

Assesses our partners' capacities to address health, using qualitative data about community strengths and historical forces of change.



15 Determinants of Equity help us understand where inequities exist in the communities we serve. The determinants cover areas like quality education, food systems, equity in justice systems, and more.

[Visit our website](https://doh.wa.gov/data-statistical-reports/state-health-assessment) to learn more about DOH Health Assessments.
(<https://doh.wa.gov/data-statistical-reports/state-health-assessment>)

DOH 820-283 June 2024 (CS)

To request this document in another format, call 1-800-525-0127. Deaf or hard of hearing customers, please call 711 (Washington Relay) or email doh.information@doh.wa.gov.