



Washington Environmental Health  
Disparities Map (EHD Map)  
Tribal Consultation



May 4, 2023

# AGENDA

Welcome & Introductions/Lacy

Overview of the EHD Collaboration Activities/Laura

DOH Plan for Incorporating Feedback and Plans for Mitigating Concerns/Laura

Questions/Comments/Lacy & All

Next steps, including invite for continued collaboration & Closing/Lacy



## **Government-to-Government Commitment**

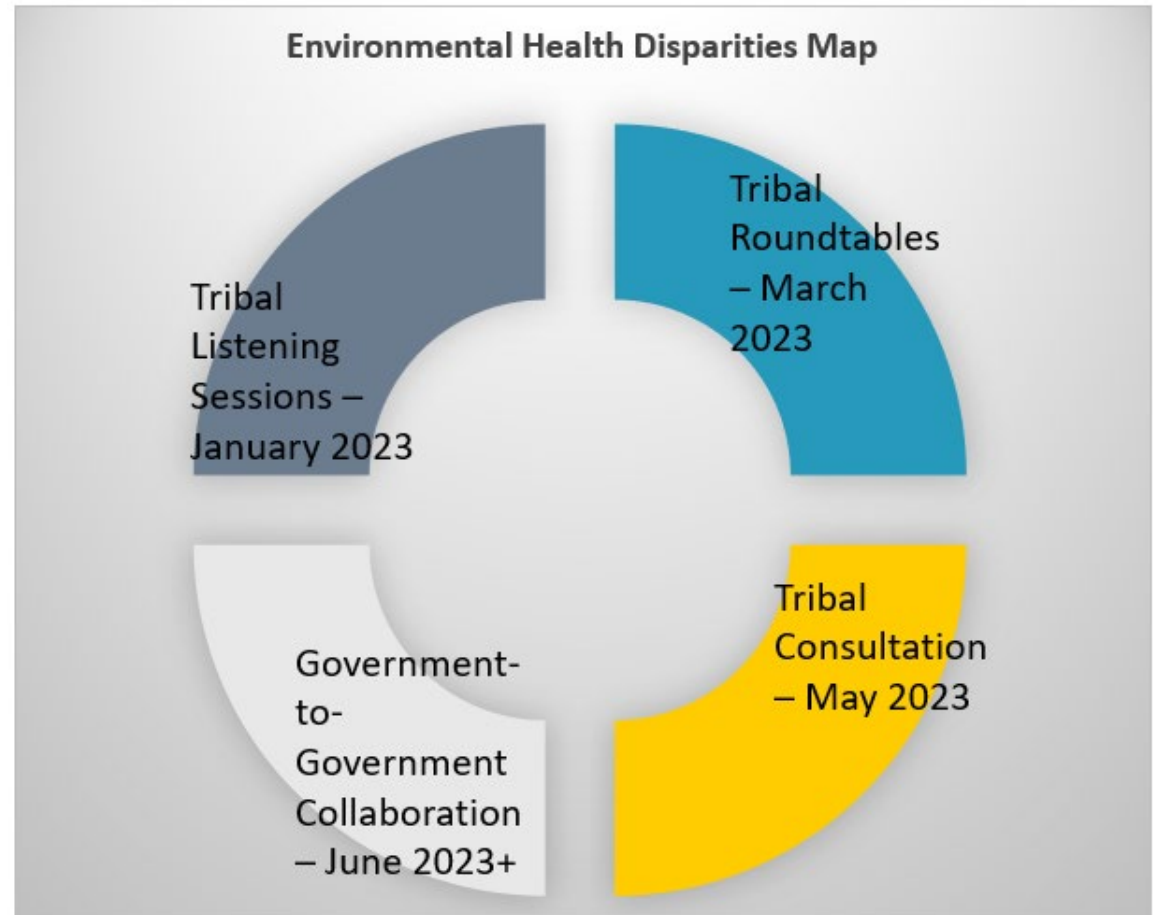
Washington State Department of Health | 3

# Issue for Consultation

---

- [Healthy Environment for All \(HEAL\) Act](#) requires Department of Health to maintain and update the [Environmental Health Disparities map](#)

# EHD MAP CONSULTATION TIMELINE



# DOH Proposed Action

---

- Feedback we are incorporating:
  - Develop map guidance that:
    - Includes [HEAL](#)/[CCA](#)/[CETA](#) definition of highly impacted community
    - Describes how to mitigate weaknesses, supplementary tools
  - Review and modify methods for existing indicators
  - Develop measures that are valued by Tribes
  - Include tribal partners in updating the map, including developing new measures

# DOH Proposed Action

---

- Concerns we plan to mitigate:
  - Additional capacity for tribal collaboration
  - Ongoing, frequent, and meaningful opportunities for collaboration and consultation
  - Explore:
    - Alternative geographic units to census tracts
    - Adding tribal data to existing measures and in new measure development
    - Improving tribal lands overlay in Information by Location tool

# DISCUSSION QUESTIONS

1. Any questions?

2. Any concerns?

3. Any additional feedback  
to guide the DOH  
Proposed Plan?



# Next Steps

- A Dear Tribal Leader letter will be sent out with notes from today's meeting within one week. It will include contact information for tribal government or program representatives who want to be part of ongoing collaboration.
- A reminder that if a tribal nation requests a "consultation" in their format, to contact the Secretary

Thank You!

---



# Contact Information

---

**Candice Wilson (Lummi)**

Tribal Policy Director  
Office of Policy, Performance,  
and Evaluation  
Washington State Department  
of Health

[candice.wilson@doh.wa.gov](mailto:candice.wilson@doh.wa.gov)

360-819-7626

**Laura Johnson**

Office Director  
Environmental Public Health  
Sciences  
Washington State Department  
of Health

[laura.johnson@doh.wa.gov](mailto:laura.johnson@doh.wa.gov)

360-236-3325



To request this document in another format, call 1-800-525-0127. Deaf or hard of hearing customers, please call 711 (Washington Relay) or email [civil.rights@doh.wa.gov](mailto:civil.rights@doh.wa.gov).

# Indicator Ideas

- Expand Proximity to Hazardous Waste Treatment Storage and Disposal Facilities Indicator (Legacy DOD sites, underground storage tanks)
  - Wood stove use
  - **Wildfire smoke exposure**
  - Wildfire risk
  - Slide risk
  - **Water quality**
  - Marine traffic air quality pollution
  - **Climate change**
  - Fish and natural resource consumption rates
  - Ocean acidification
  - **Harmful algal blooms**
  - Stream temperature pollution
  - Access to traditional foods
  - Intergenerational knowledge transfer
  - Natural resource dependent livelihoods
  - Food deserts
  - Healthcare access
  - Cell and internet service access
- Hope to include these in the next version**
- **Wildfire smoke exposure**
  - Revise Proximity to Hazardous Waste Treatment Storage and Disposal Facilities Indicator (Legacy DOD sites, underground storage tanks)
  - **Pesticides**
  - **Asthma**

Bold indicates measure/theme under development