



# Clean Energy Transformation Act (CETA) Cumulative Impacts Analysis (CIA)

Utility Workshop, March 16, 2021

# Meeting Agenda

- **Introductions - DOH**
- **CETA CIA statute and Meeting Goals - DOH**
- Designating **Highly Impacted Communities - DOH**
- History of **Environmental Health Disparities Map - Front & Centered**
- **Process and Demo: locating Highly Impacted Communities - DOH**
- About **Climate Projections Data - UW**
- **Next steps - DOH**
- **Questions - ALL**

## CETA CIA Statute

By **December 31, 2020**, the DOH must develop a cumulative impact analysis (CIA) to **designate the communities highly impacted by fossil fuel pollution and climate change** in Washington.

## CETA CIA Statute

By **December 31, 2020**, the DOH must develop a cumulative impact analysis (CIA) to **designate the communities highly impacted** by **fossil fuel pollution** and **climate change** in Washington.

**CIA Goal:** highlight communities that are **currently experiencing** a **disproportionate** share of **environmental risk factors** and that must, according to CETA, **benefit equitably** in the transition to clean energy economy.

## CETA CIA Statute

By **December 31, 2021**, Commerce and the Utilities and Transportation Commission must adopt rules for establishing the requirements for incorporating the cumulative impact analysis into the criteria for developing clean energy action plans.

# Meeting Goals

- Describe the **designation** of Highly Impacted Community

# Meeting Goals

- Describe the **designation** of Highly Impacted Community
- Demonstrate **methods** for how utilities can identify the highly impacted communities in their service area

# Highly Impacted Communities

Designation criteria, census tracts that:

- Covered or partially covered by ‘**Indian Country**’ as defined in and designated by RCW 19.405.020.
- **Ranked a 9 or 10 on the Environmental Health Disparities (EHD) Map**, as designated by the Department of Health.



FRONT & CENTERED

# Washington Environmental Health Disparities Map

---

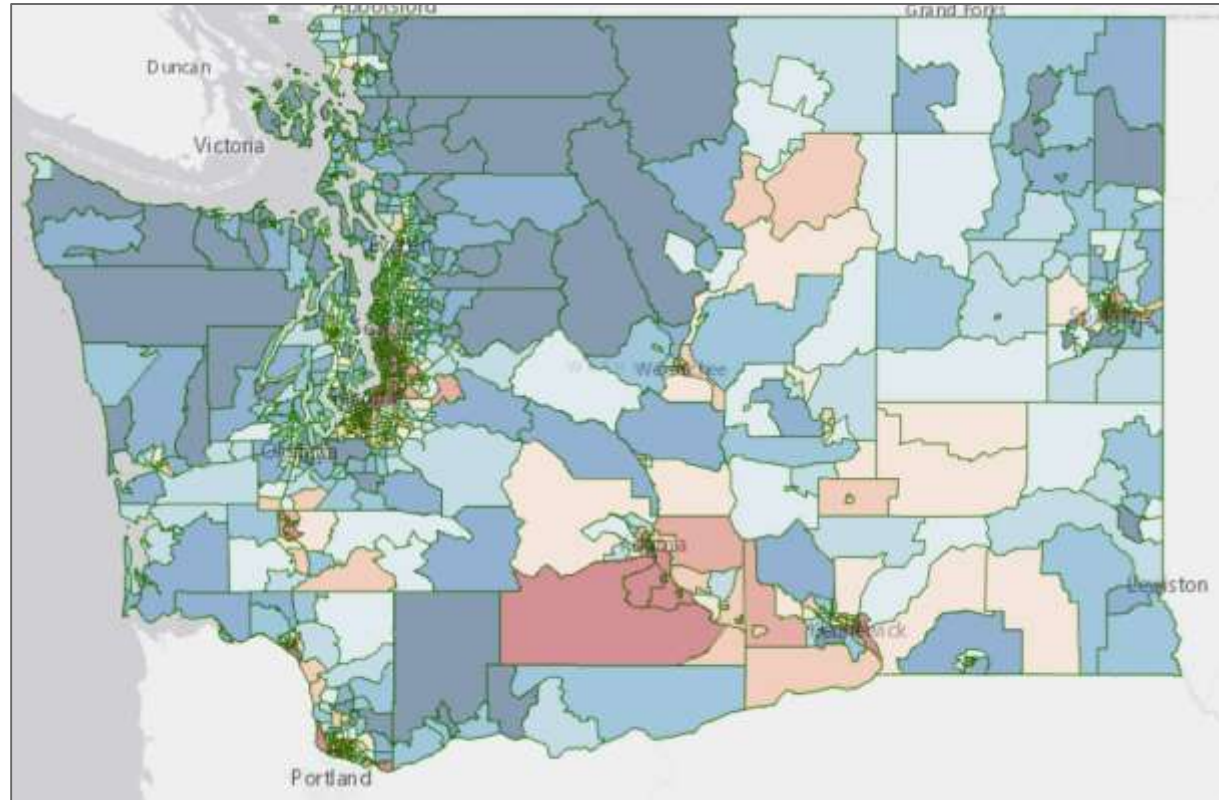
DERIC GRUEN  
FRONT AND CENTERED

# Front and Centered



Front and Centered is a coalition of communities of color-led groups in Washington State with diverse missions and work, who come together to advance climate and environmental justice in our state

# Washington Environmental Health Disparities Map



# Partners



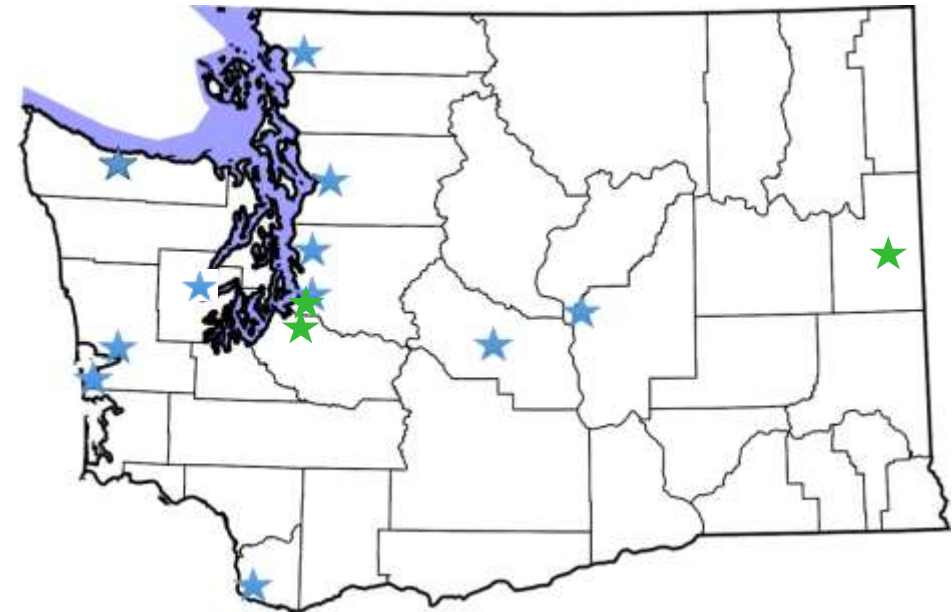
# Listening Sessions

- Led by Front & Centered
- Multi-cultural/lingual conversations about pollution, climate change, sensitivity, and resilience



# Listening Sessions

- Communities of color
- Households with lower incomes
- Immigrants and refugees
- Linguistically isolated groups



★ 2017 Listening Sessions

★ 2020 Community Conversations

# Environmental Justice Task Force

- 9 public meetings formatted for extensive community input
- 2 Subcommittees that met monthly from Dec. 2019 – July 2020
- Mapping & Community Engagement Subcommittees made up of TF members, state and local agencies, & community members
- 2 community listening sessions
- 1 FTE Project Manager
- .5 FTE Community Engagement Coordinator
- 10 listening sessions hosted by Front & Centered
- Outreach to other states, especially CA and OR





# Environmental Justice Task Force

Recommendations for Prioritizing EJ in Washington State Government

October 2020



## RECOMMENDATION

- That state agencies use the EHD data and map in agency activities...
  - ➔ **Build** demographic & environmental context...
  - ➔ **Conduct** EJ review & analysis routinely...
  - ➔ **Center** EJ as the priority intended outcome in resource allocation...

# Ecology Public Participation Grants Example

- **Grant Program Scorecard**
- <https://apps.ecology.wa.gov/publications/documents/1907006.pdf>

**Facilitates public participation in highly impacted community.**

Project focused on highly impacted community with a WTN Environmental Health Disparity index rank of 10 = 10

Project focused on highly impacted community with a WTN Environmental Health Disparity index rank of 8-9 = 5

Project focused on areas with a WTN Environmental Health Disparity index rank 7 or below = 0

\_\_\_/10

## Development of CETA CIA

- DOH, UW, Front & Centered and community organizations
- Tight timeline & limited resources
- Relied on existing resources (data & platform)
- WA **fossil fuel pollution** is primarily from particulates, ozone, and nitrogen oxides.

# EHD Map for CETA CIA

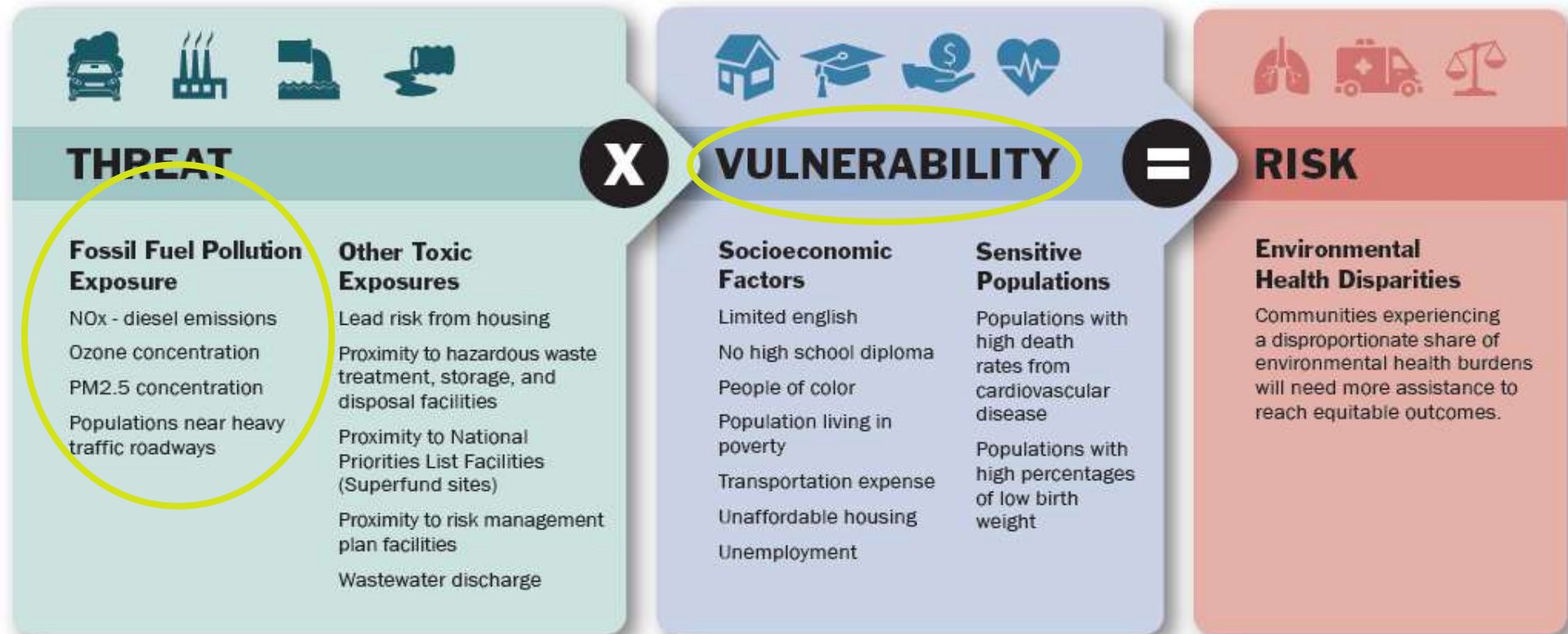
EHD map chosen:

- Includes **fossil fuel pollution** indicators
- For most **climate hazards**, current population vulnerability is major driver of health impacts
- **Well-known vulnerability index** for environmental health disparities
- Used by other state agencies

# Using Environmental Health Disparities Map for CETA CIA

Washington Environmental Health Disparities

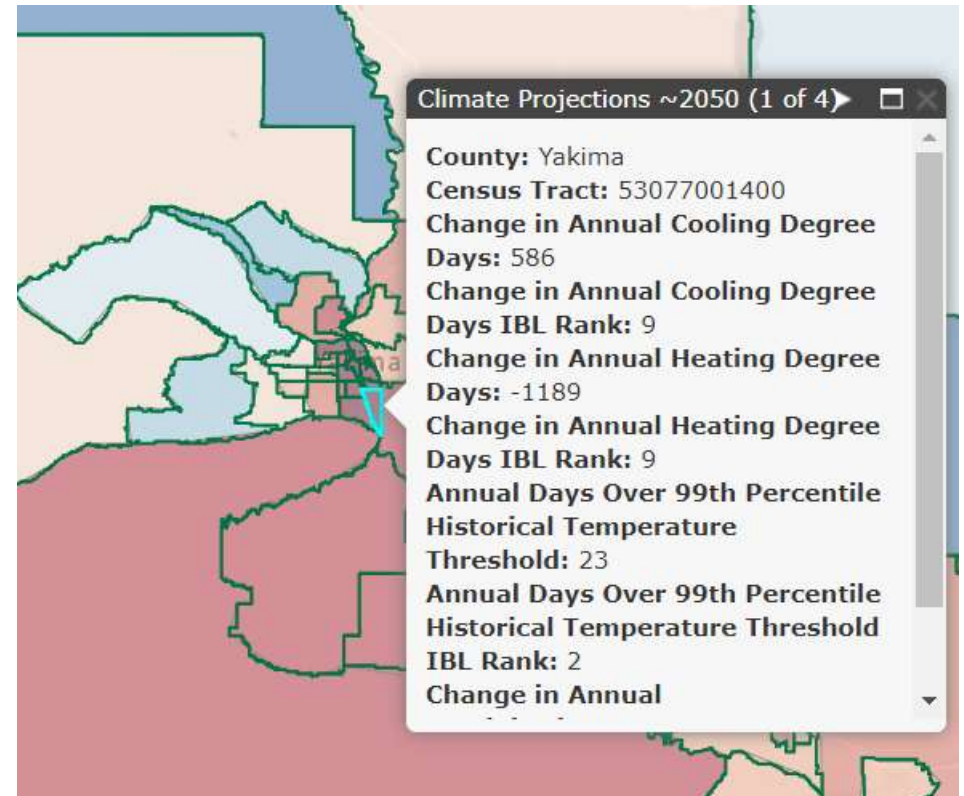
**Threat x Vulnerability = Risk**



# Climate Projections added to Map Layer

Climate change metrics:

- Practical to generate
- Serve as proxies for range of climate hazards



# Climate Change Projections Not Included in Highly Impacted Community Designation

- Climate vulnerability captured by **existing vulnerability** indicators
- Climate measures available **not comprehensive**
- **Additional** sensitivity analysis required

# DOH Web Pages Created for CETA CIA

1. [CETA CIA](#)
2. [Instructions for utilities](#)
3. [Climate Projections](#)



# How to Find Highly Impacted Communities

## Instructions for utilities

1. Using Highly Impacted Communities Data Table (CSV)
2. Using the Environmental Health Disparities Map

# Highly Impacted Communities Data Table

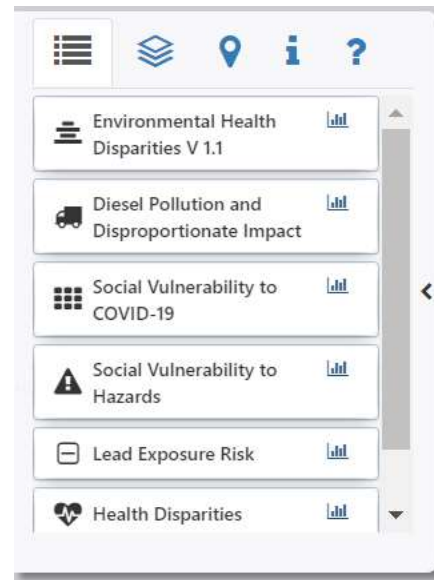
1. Open table.
2. Column A – Utility name.
3. One row for each census tract in a utility.
4. Column E – Utility has highly impacted community.
5. Column F – Community is highly impacted.
6. Tribal lands & Environmental Health Disparities rank.

# Highly Impacted Communities from EHD Map

1. Watch the [4-minute video](#).
2. Understanding the rankings (included in the video).
3. 9 & 10 ranked communities.
4. Public & private utility boundary layers.
5. Tribal lands layer.
6. Climate projection map layer.

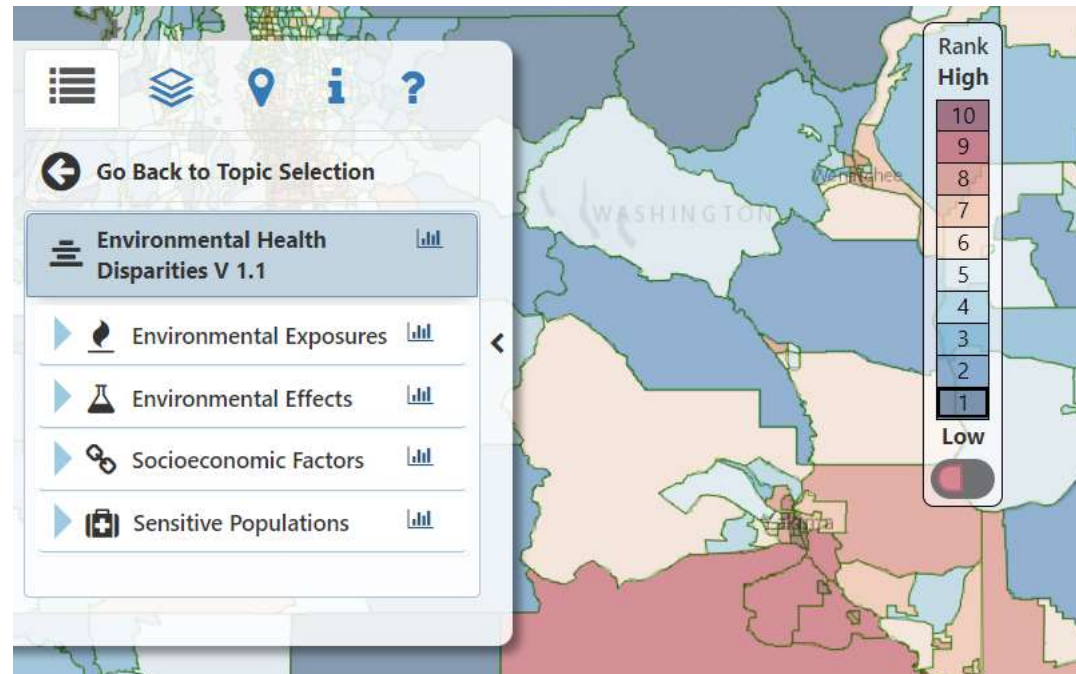
# Highly Impacted Communities from EHD Map

Accessing the map: Go to [doh.wa.gov/ibl](https://doh.wa.gov/ibl) and select the first topic “Environmental Health Disparities”



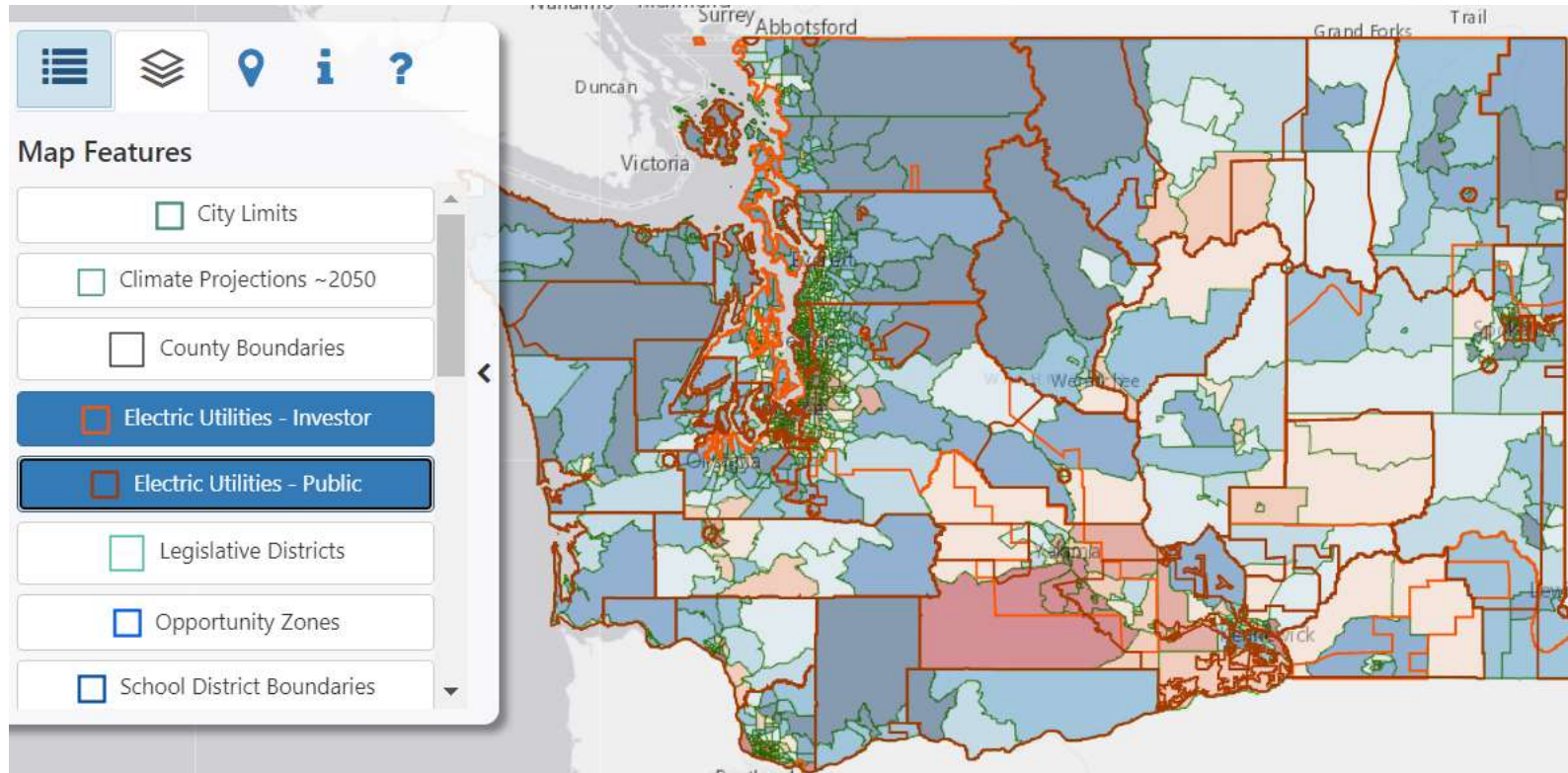
# Highly Impacted Communities from EHD Map

9 & 10 ranked communities:



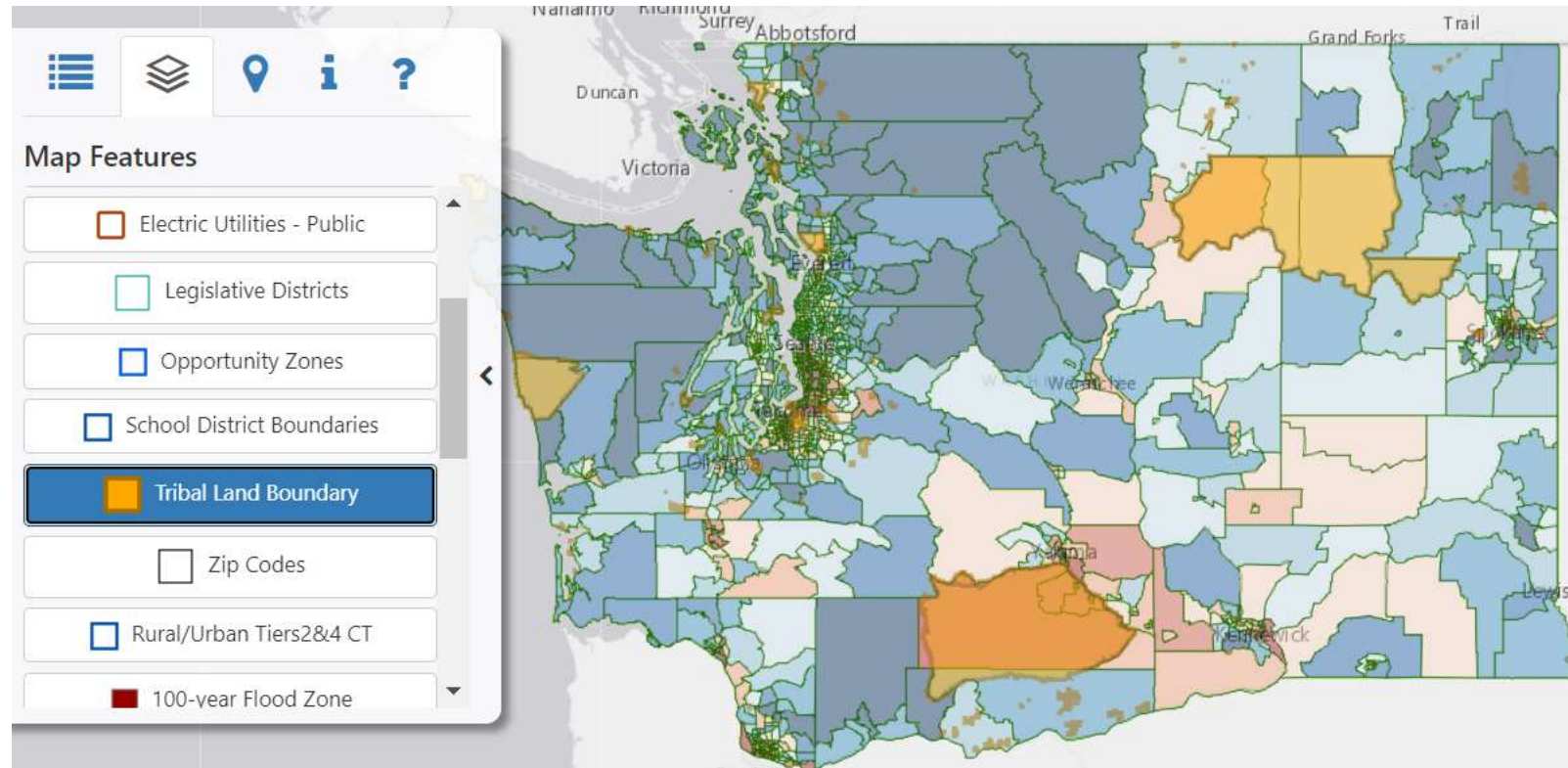
# Highly Impacted Communities from EHD Map

Public & private utility boundary layers:



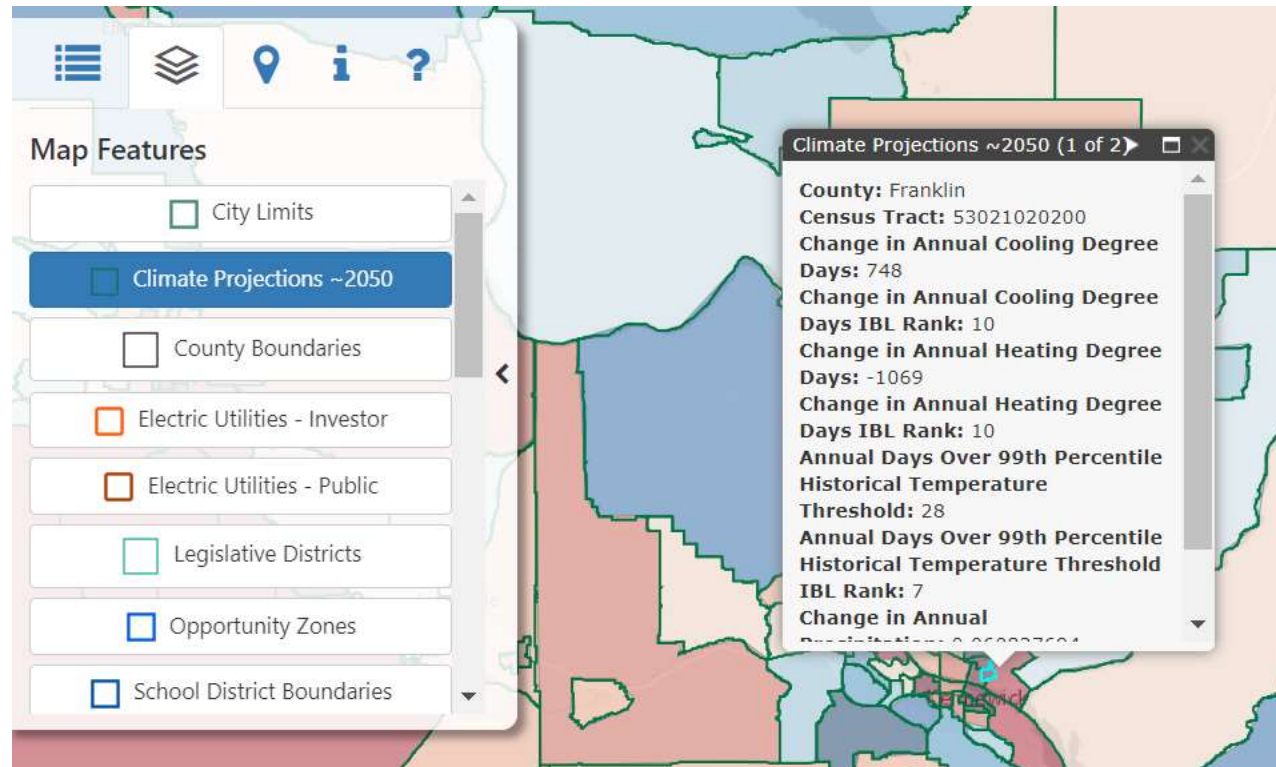
# Highly Impacted Communities from EHD Map

Tribal land boundary layer:



# Highly Impacted Communities from EHD Map

Climate projection map layer:





UNIVERSITY OF WASHINGTON

## Next Steps

1. Continue to work on adding climate projection data.
2. Send any feedback to [DOH.WTN@doh.wa.gov](mailto:DOH.WTN@doh.wa.gov).
3. Updating EHD map. Next update planned at end of year.
4. Send us information about your projects to benefit highly impacted communities.

# QUESTIONS



To request this document in another format, call 1-800-525-0127. Deaf or hard of hearing customers, please call 711 (Washington Relay) or email [civil.rights@doh.wa.gov](mailto:civil.rights@doh.wa.gov).

DOH XXX-XXX March 2021