

April 2020

# Drinking Water State Revolving Fund



## City of College Place

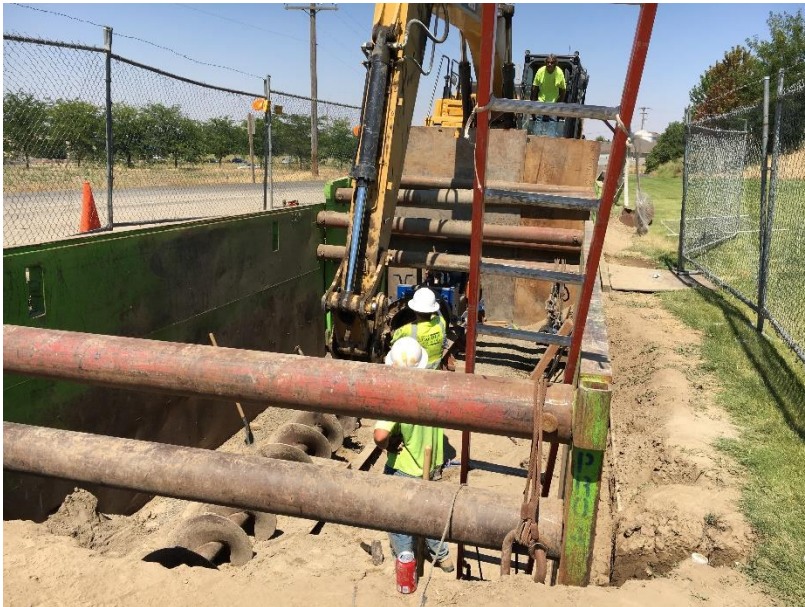
### Christ Community Fellowship Consolidation Project

Christ Community Fellowship serves the College Place community as both a place of worship and school with a population of 100 students. Christ Community Fellowship's well was impacted by nitrates almost twice the maximum contaminant level. The initial compliance proposal was for Christ Community Fellowship to drill a new well, but City of College Place became involved and offered to connect the church and school to its municipal water system. In order to facilitate this connection, a new water main and well were needed. Given the large scope of work, the City phased the project over the course of three years. The City agreed to install the new transmission main first to allow connection of the Christ Community Fellowship, which happened in August 2019 in time to provide safe drinking water to the students for the 2019 school year. In addition, this project will provide City of College Place with a new well to better serve Christ Community Fellowship and improves the resiliency of College Place's water system in response to the declining aquifer in this area.

College Place received three DWSRF loans for a total of \$5.9 million and each loan included 50 percent principal forgiveness since the project consolidated a troubled water system.

#### Public health and environmental benefits

Christ Community Fellowship church and school now receive safe and reliable drinking water from City of College Place. The new well results in College Place becoming more resilient.



Directional drilling of new water main.