

Pickering Passage

Annual Shellfish Growing Area Review



Prepared By: Fiona Dahl

Area: Pickering Passage

Year Ending: December 31, 2023

Classification: Approved, Prohibited

Activities in the Growing Area in 2023

The growing area was sampled six times in accordance with the National Shellfish Sanitation Program (NSSP) Systematic Random Sampling criteria. Shoreline follow-up sampling in Jones Creek was conducted and continued to periodically have elevated bacteria levels. Mason County Public Health plans to conduct a more thorough investigation of pollution sources.

A reliability evaluation and inspection of the Carolyn Beach Wastewater Treatment Plant (WWTP) and Marina were completed and no changes to the current combined Prohibited area are recommended. In addition, an evaluation of Indian Cove, Jarell's Cove and Jarrell Cove State Park marinas were completed. No changes to the current Prohibited areas were recommended. Comprehensive evaluation reports for each of these marinas and WWTP are in the central growing area file.

The Mason Conservation District received National Estuary Program funds through the Washington State Conservation Commission to provide technical assistance, education, and outreach to landowners to promote the livestock best management practices.

Analytical Results of Water Samples

Table 1 summarizes the results of the last 30 samples collected from the area. This summary shows that all stations pass the NSSP water quality standard.

Change in Actual Pollution Sources that Impact the Growing Area

We currently have no information indicating that the area has new sources of pollution.

Classification Status

- Well within the classification standards
- Meets standards, but threatened with downgrade in classification
- Fails to meet current classification standards

Remarks and Recommendations

Table 1 shows that all stations meet the NSSP water quality standard for an Approved classification and the area is correctly classified.

TABLE 1. Summary of Marine Water Data (SRS) for the Pickering Passage Growing Area

Sampling Event Type: Regulatory

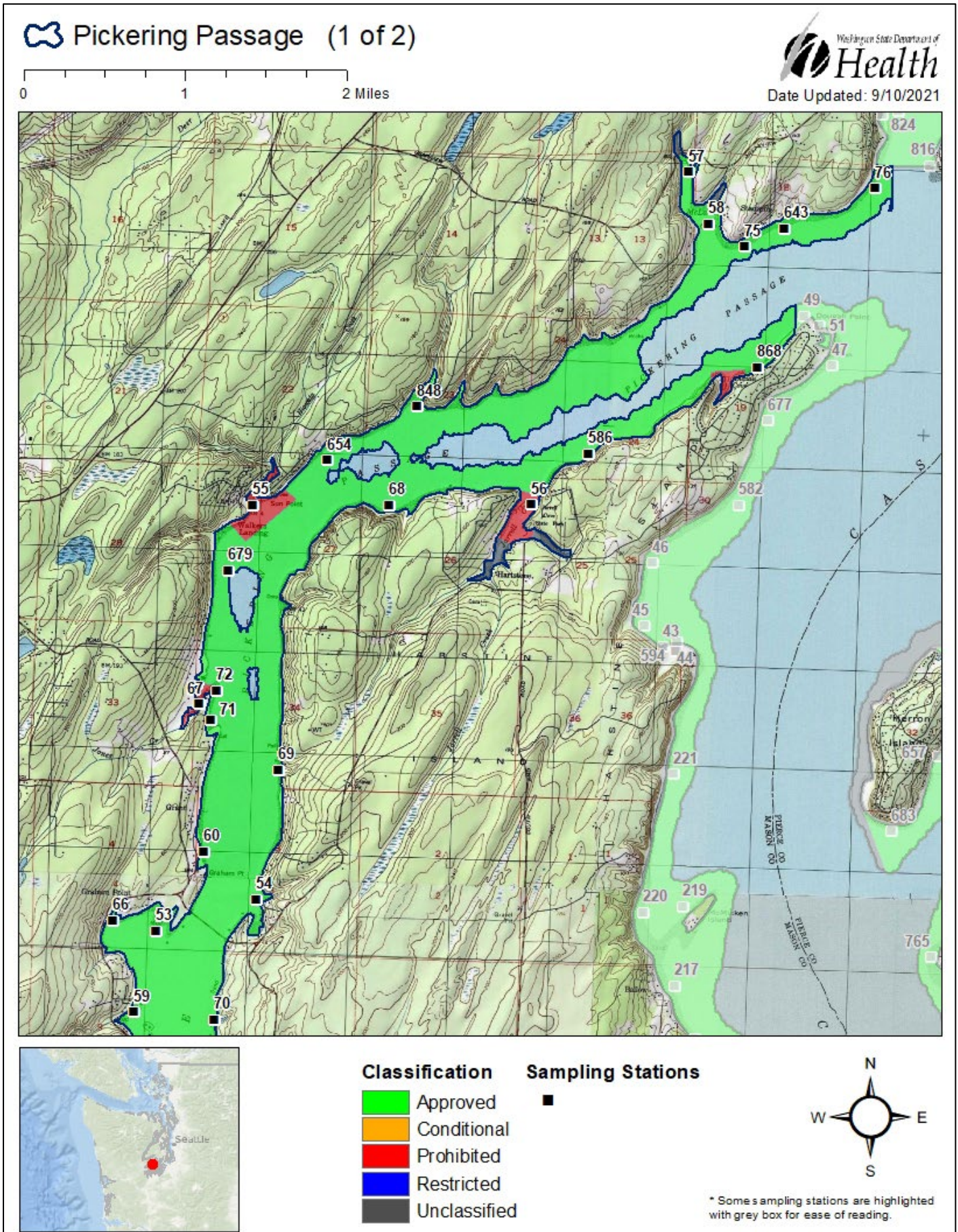
Maximum Number of Samples: 30

Tides Included: All

Station Number	Classification	Date Range	Range (FC/100mL)	Geomean (FC/100mL)	Est. 90 th Percentile (FC/100mL)	Meets Standard
52	Approved	2/14/2019 - 12/19/2023	1.7 - 64.0	3.0	12.5	Y
53	Approved	2/14/2019 - 12/19/2023	1.7 - 7.8	2.1	3.6	Y
54	Approved	2/14/2019 - 12/19/2023	1.7 - 49.0	2.6	7.9	Y
57	Approved	5/8/2019 - 12/19/2023	1.7 - 110.0	4.1	21.3	Y
58	Approved	5/8/2019 - 12/19/2023	1.7 - 49.0	2.7	9.1	Y
59	Approved	2/14/2019 - 12/19/2023	1.7 - 23.0	2.4	5.9	Y
60	Approved	2/14/2019 - 12/19/2023	1.7 - 11.0	2.1	4.1	Y
61	Approved	2/14/2019 - 12/19/2023	1.7 - 6.8	2.1	3.6	Y
62	Approved	2/14/2019 - 12/19/2023	1.7 - 14.0	2.2	4.6	Y
63	Approved	2/14/2019 - 12/19/2023	1.7 - 4.5	1.9	2.8	Y
64	Approved	2/14/2019 - 12/19/2023	1.7 - 4.5	2.0	3	Y
65	Approved	2/14/2019 - 12/19/2023	1.7 - 4.5	1.8	2.5	Y
66	Approved	2/14/2019 - 12/19/2023	1.7 - 23.0	2.7	7.9	Y
68	Approved	2/14/2019 - 12/19/2023	1.7 - 23.0	2.1	4.5	Y
69	Approved	2/14/2019 - 12/19/2023	1.7 - 11.0	2.5	5.3	Y
70	Approved	2/14/2019 - 12/19/2023	1.7 - 49.0	2.3	5.3	Y
71	Approved	2/14/2019 - 12/19/2023	1.7 - 49.0	2.5	6.8	Y
72	Approved	2/14/2019 - 12/19/2023	1.7 - 17.0	2.3	4.7	Y
74	Approved	2/14/2019 - 12/19/2023	1.7 - 9.2	1.9	3	Y
75	Approved	2/14/2019 - 12/19/2023	1.7 - 22.0	2.4	6.1	Y
76	Approved	2/14/2019 - 12/19/2023	1.7 - 21.0	2.0	4.1	Y
586	Approved	2/14/2019 - 12/19/2023	1.7 - 12.0	1.9	3.1	Y
643	Approved	2/14/2019 - 12/19/2023	1.7 - 14.0	2.0	3.8	Y
654	Approved	2/14/2019 - 12/19/2023	1.7 - 13.0	2.0	3.9	Y
679	Approved	2/14/2019 - 12/19/2023	1.7 - 7.8	2.0	3.4	Y
768	Approved	2/14/2019 - 12/19/2023	1.7 - 4.5	1.8	2.3	Y
769	Approved	2/14/2019 - 12/19/2023	1.7 - 4.0	1.8	2.4	Y
770	Approved	2/14/2019 - 12/19/2023	1.7 - 4.5	1.8	2.3	Y
848	Approved	2/14/2019 - 12/19/2023	1.7 - 49.0	2.3	6.1	Y
868	Approved	5/8/2019 - 12/19/2023	1.7 - 7.8	2.0	3.1	Y
55	Prohibited	2/14/2019 - 12/19/2023	1.7 - 79.0	2.9	11.3	Y
56	Prohibited	2/14/2019 - 12/19/2023	1.7 - 79.0	2.8	9.9	Y
67	Prohibited	2/14/2019 - 12/19/2023	1.7 - 920.0	7.8	88.6	N

The standard for approved shellfish growing waters is fecal coliform geometric mean not greater than 14 organisms/ 100 mL with an estimated 90th percentile not greater than 43 organisms/ 100 mL. The above table shows bacteriological results in relation to program standards.

MAP 1. Pickering Passage Growing Area (1 of 2)

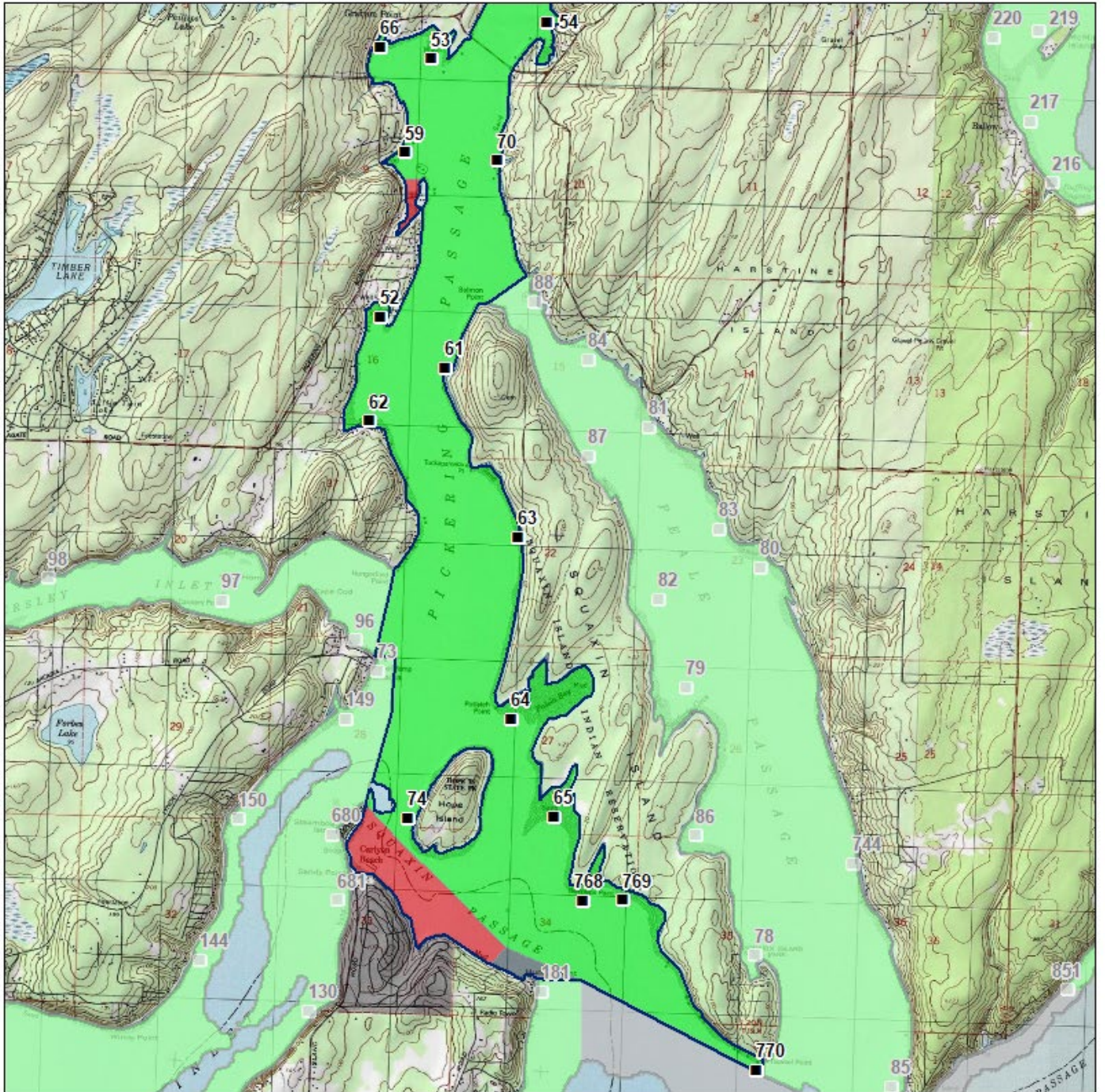


MAP 2. Pickering Passage Growing Area (2 of 2)

Pickering Passage (2 of 2)

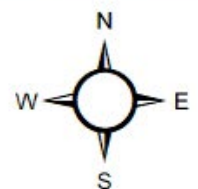


Date Updated: 9/10/2021



Classification	
■	Approved
■	Conditional
■	Prohibited
■	Restricted
■	Unclassified

Sampling Stations



* Some sampling stations are highlighted with grey box for ease of reading.