

Washington State

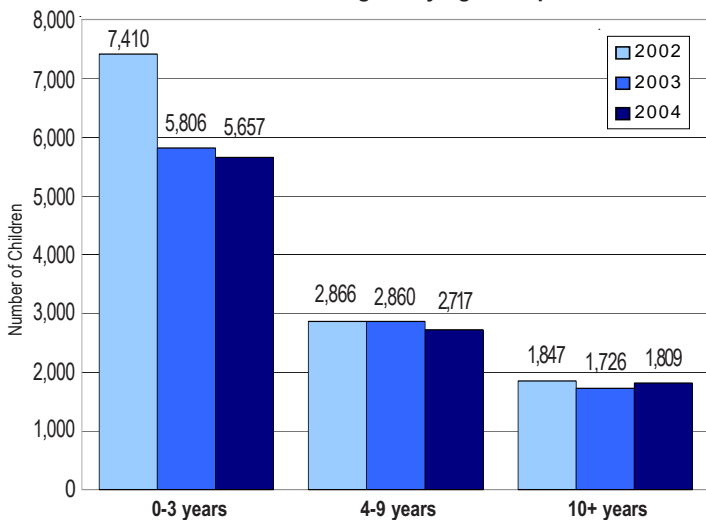
Profile of Children and Youth with Special Health Care Needs

Population of Children 0-19 Years by Age Group and Year

Age Group	1990	2000	2003	2004
0-4 years	374,357	394,306	399,183	401,158
5-9 years	370,640	425,909	410,472	410,481
10-14 years	336,801	434,836	446,791	445,737
15-19 years	323,849	427,968	439,282	442,889
Total	1,405,647	1,683,019	1,695,728	1,700,265

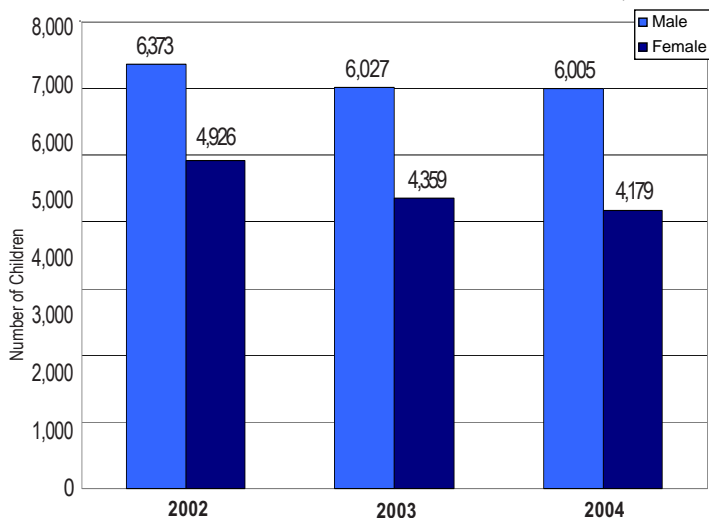
Source: Intercensal/Postcensal Population Estimates, Office of Financial Management

Number* of Children Served by Children with Special Health Care Needs Program by Age Group and Year



*Total number of children served: 2002=12,130, 2003=10,399, 2004=10,185. The number of children served by age and gender may not equal the total number of children served due to non-reporting of gender or age for some cases.
Source: Child Health Intake Forms, Children with Special Health Care Needs Program, Washington State Department of Health

Number* of Children Served by Children with Special Health Care Needs Program by Gender

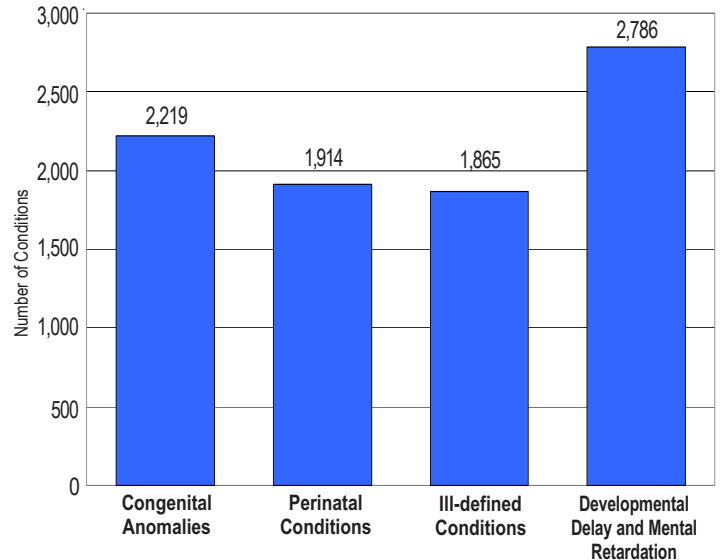


Source: Child Health Intake Forms, Children with Special Health Care Needs Program, Washington State Department of Health

"Children with special health care needs are children who have, or are at increased risk for, chronic physical, developmental, behavioral, or emotional conditions and who also require health and related services of a type or amount beyond that required by children generally."

(Maternal and Child Health Bureau)

Leading Four Diagnostic Categories* among Children Served by the Children with Special Health Care Needs Program: 2004



*Based upon the number of conditions recorded for each child.

Source: Child Health Intake Forms, Children with Special Health Care Needs Program, Washington State Department of Health

Number of Children in Special Education Services under the Individuals with Disabilities Education Act (IDEA) Part B, as of December 1, 2004

Diagnostic Category	Number
Developmental Delay -Preschool	16,426
Serious Behavioral Disability	5,073
Orthopedic Impairment	732
Health Impairment	20,271
Specific Learning Disability	47,756
Mental Retardation	5,577
Multiple Disabilities	2,543
Deaf	466
Hearing Impairment	921
Visually Impaired	321
Deaf-Blindness	41
Communication Disorder	20,039
Autism	3,746
Traumatic Brain Injury	374
Total	124,286

*Fewer than five or no cases reported.

Source: Office of Superintendent of Public Instruction Special Education Operations IDEA Part B Child Count Report

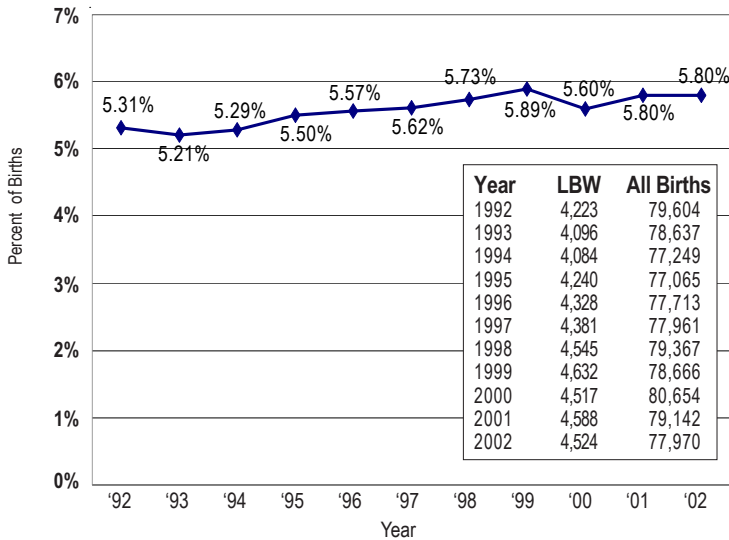
Number* of Children Age 0-35 Months with an Individualized Family Service Plan Who Received Early Intervention Services

Oct. 2002-Sept. 2003	6,506
Oct. 2003-Sept. 2004	6,806

*Unduplicated count.

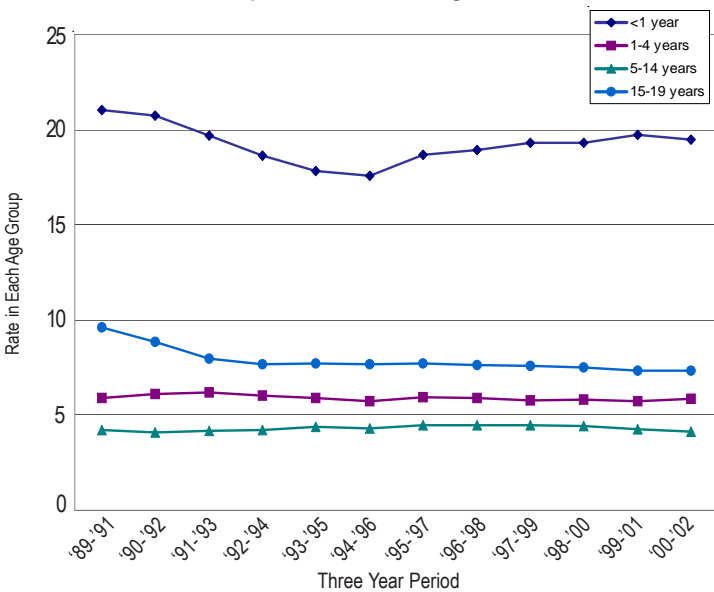
Source: *Infant Toddler Early Intervention Program, Division of Developmental Disabilities, Department of Social and Health Services*

Number and Percent of Babies Born with Low Birth Weight* (less than 2,500 grams)



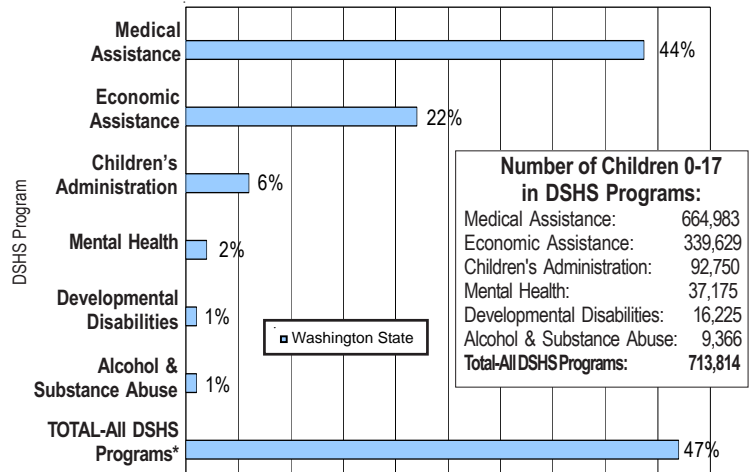
*Percent of births for which the birthweight is known.
Source: *VistaPHw 5.0*

Age-Specific Hospitalization Rate* for Chronic Conditions per 1,000 Children Ages 0-19



*Number of hospitalizations per 1,000 population of children in each age group calculated as three-year rolling averages.
Source: *VistaPHw 5.0*

Percent of Children Age 0-17 in Programs of the Department of Social and Health Services: July 2002 - June 2003

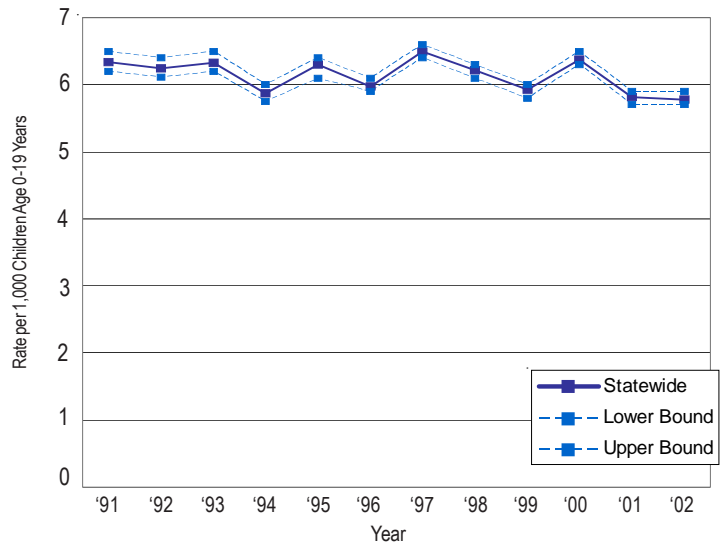


Number of Children 0-17 in DSHS Programs:

Medical Assistance:	664,983
Economic Assistance:	339,629
Children's Administration:	92,750
Mental Health:	37,175
Developmental Disabilities:	16,225
Alcohol & Substance Abuse:	9,366
Total-All DSHS Programs:	713,814

* Based upon unduplicated count of children within each service category.
Source: *Client Services Database, Research and Data Analysis Division, Department of Social and Health Services*

Hospitalization Rate* for Chronic Conditions per 1,000 Children Age 0-19 Years: County Rate Compared to State Rate



*Number of hospitalizations per 1,000 population of children 0-19.
Source: *VistaPHw 5.0*
Upper and lower bounds refer to the upper and lower range of the 95% confidence interval within which the actual rate lies.

This county profile is part of the Children and Youth with Special Health Care Needs: Washington State Report. For more information, contact the Children with Special Health Care Needs Program at (360) 236-3571, or <http://www.doh.wa.gov/cfh/mch/cshcnhome2.htm>

