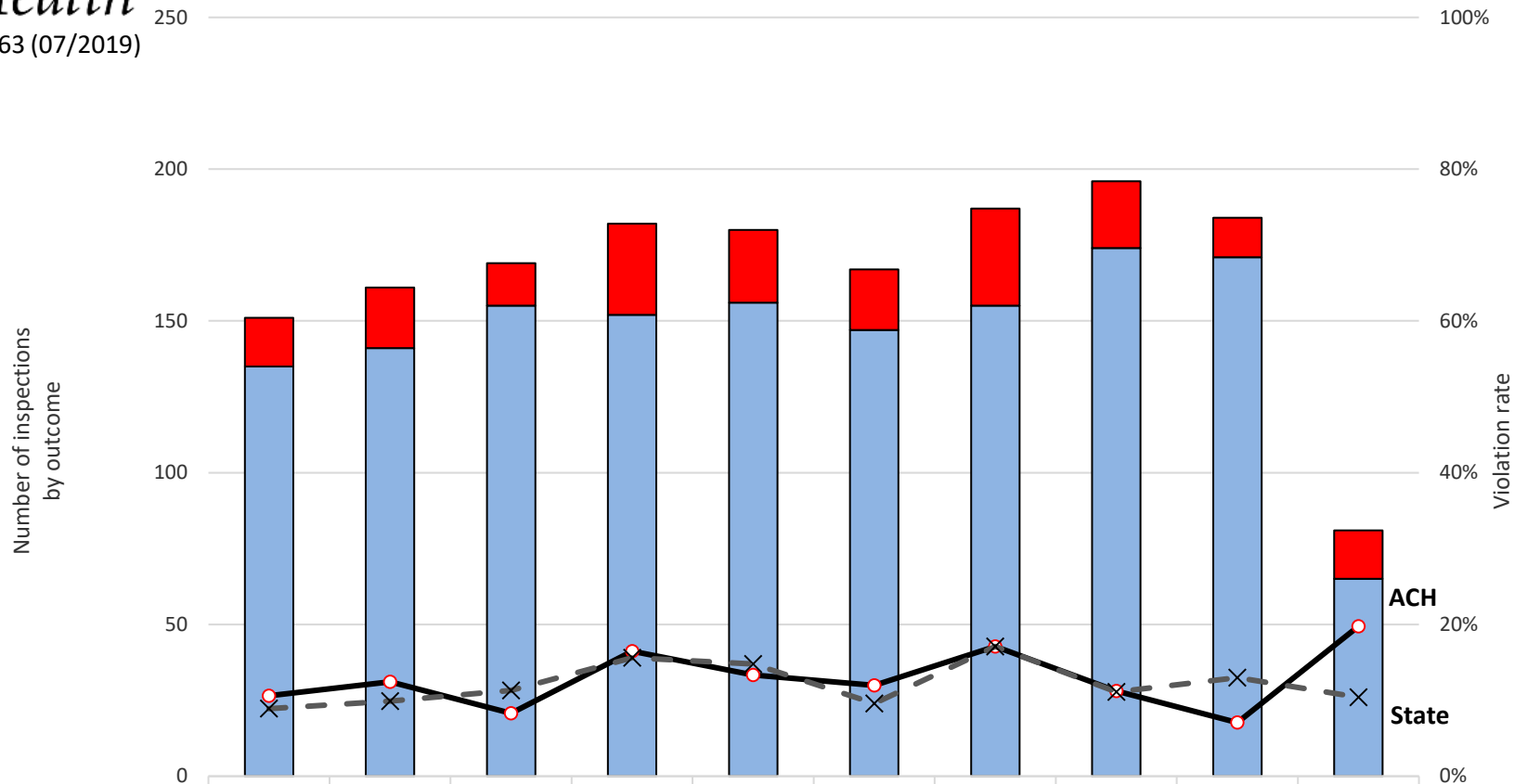




DOH340-163 (07/2019)

### Sales of Tobacco to Minors Greater Columbia ACH and Washington State



	2009	2010	2011	2012	2013	2014	2015	2016	2017	2018
<span style="color: red;">■</span> # of ACH violations	16	20	14	30	24	20	32	22	13	16
<span style="color: blue;">■</span> # of compliant ACH checks	135	141	155	152	156	147	155	174	171	65
<span style="color: black;">—●—</span> ACH violation rate	10.6%	12.4%	8.3%	16.5%	13.3%	12.0%	17.1%	11.2%	7.1%	19.8%
<span style="color: gray;">-X-</span> State violation rate	8.9%	9.9%	11.3%	15.6%	14.8%	9.6%	17.1%	11.1%	13.0%	10.4%

Source: Washington State Department of Health  
Synar Compliance Check Database 2009-2018

Technical note: Overall statewide rates are based on a yearly state Synar sample. County attempts represent only eligible and completed attempts. County specific rates are based on a county oversample that is not a part of the state sample. Counties were not oversampled in 2018.

Greater Columbia Accountable Community of Health (ACH) counties: Asotin, Benton, Columbia, Franklin, Garfield, Kittitas, Walla Walla, Whitman, and Yakima