

Changes for medical cannabis patients

In addition to the option to join the new medical cannabis database, the law requires:

Standard Authorization Form

All medical cannabis authorizations must be written on the Department of Health form dated June 2015 (or later). All authorizations issued on or after July 1, 2018 are required to be printed on authorization tamper-resistant paper containing the RCW 69.51A.030 logo.

Medical Cannabis Consultants

A certified medical cannabis consultant is on staff in every licensed and medically endorsed cannabis store. The consultant is not a medical provider and can only:

- Enter patient and designated provider information from the authorization form into the database and create the medical cannabis recognition card.
- Assist the patient with selecting products.
- Describe risks and benefits of methods for using products.
- Give advice on ways to properly store products and keep them safe from children and pets.
- Provide instruction on proper use of products.

Recognition Card Fee

The cardholder must pay a \$1 fee when their card is created. This fee is collected by the medically endorsed store and paid to the Department of Health.

Note: The law does not restrict retail stores from charging more than \$1. The average cost for each card may be between \$1 and \$10 (or more) depending on which store you go to.

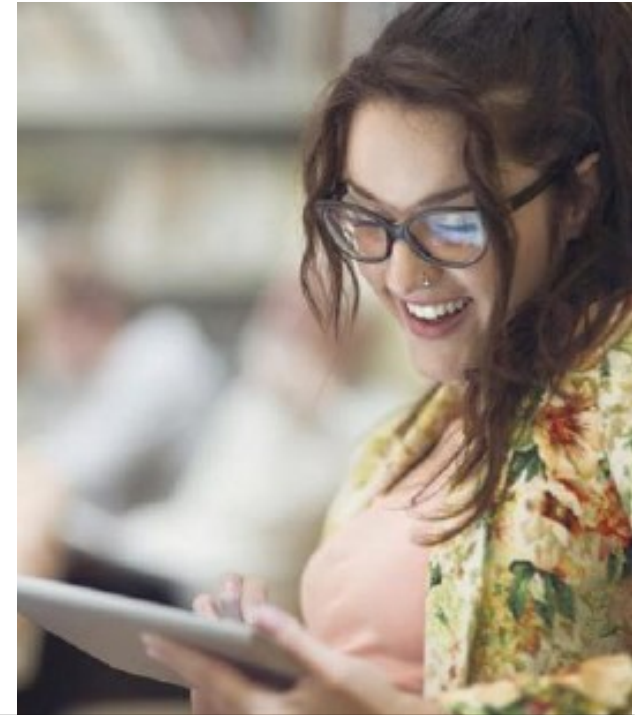
Medical cannabis laws and rules

The Cannabis Patient Protection Act (SB5052) was signed into law April 2015 and went into full effect on July 1, 2016.

This law aligns licensing and regulation of all cannabis producers, processors and stores under the oversight of the Washington State Liquor and Cannabis Board. This includes medically endorsed cannabis stores.

Read the specific laws and rules for the medical cannabis database:

- RCW 69.51A.230
- Chapter 246-71



Learn more...

Washington State Department of Health
Medical Cannabis Program

www.doh.wa.gov/medicalcannabis

360-236-4819

medicalcannabis@doh.wa.gov

A patient's guide to the ...

Medical Cannabis Database



DOH 608-012 April 2021

Join the database, receive your medical cannabis card

Database benefits

The medical cannabis recognition card you receive when you register in the database offers many benefits:

- May buy up to three times the current limit at any licensed and medically endorsed cannabis store.
- May buy products at a licensed and medically endorsed cannabis store without paying sales and use tax.
- May have six plants and eight ounces of usable cannabis in their home and a healthcare practitioner may authorize up to 15 plants. Patients so authorized may have up to 16 ounces of usable cannabis produced from their plants.

NOTE: No more than a total of 15 plants may be grown or located in any single housing unit even if multiple qualifying patients or designated provider reside there.

- May participate in a registered medical cannabis cooperative.
- If the cardholder follows all laws, receive arrest protection.
- May purchase immature plants, clones and seeds from a licensed cannabis producer

Voluntary for patients

Medical cannabis patients are not required to be in the authorization database unless the patient is under the age of 18 years.

- Patients and designated providers who hold valid authorizations but choose not to be in the database may purchase only what the laws allow for non-patients.
- Patients and designated providers will still have an affirmative defense to criminal prosecution if they have no more than four plants and six ounces of usable cannabis in their home.

Find a store

Licensed and medically endorsed cannabis stores should have the logo at right on their door or window, or find a list of medically-endorsed stores on our website at www.doh.wa.gov/medicalcannabis/

Who can access the medical cannabis database

The medical cannabis authorization database is a secure system. State law strictly limits who can view database information and how information can be used.

The database is not linked to any other state or private systems. Only the following people can see information from the database for specific tasks:

- Access their patients' healthcare information from the database:
 - Authorizing healthcare practitioners
- Add patient information from the authorization form:
 - Certified medical cannabis consultant working in a medically endorsed cannabis store
- Learn who has accessed their healthcare information:
 - Qualifying patients
 - Designated providers
- Provide administration or pull reports:
 - Database administrator
 - Washington State Department of Health
 - Washington State Department of Revenue
 - Washington State Liquor and Cannabis Board
- Verify that a card is valid:
 - Law enforcement
 - Employee working in a medically endorsed cannabis store

How to get entered in the database

1. Bring your medical cannabis authorization form to any licensed and medically endorsed cannabis store.
2. Ask to see the medical cannabis consultant on staff who can enter your information into the database and create your medical cannabis recognition card.

