



Appendices

[Commonly Used Web Sites](#)

[CYSHCN Acronyms](#)

[CYSHCN Coordinators](#)

[CYSHCN Maxillofacial Teams](#)

[CYSHCN Neurodevelopmental Centers of Washington](#)

[Organizational Charts:](#)

Department of Health

Division of Prevention and Community Health

Office of Family and Community Health Improvement

Access, Systems and Coordination Section

Healthy Starts and Transitions Unit (includes Children and Youth with Special Health Care Needs Program)

Send appendices updates and changes to:

Children and Youth with Special Health Care Needs Program

PO Box 47880

Olympia WA 98504-7880

360-236-3571

FAX: 360-586-7868

Email: CSHCN.Support@doh.wa.gov



Alert! Each section listed in this table of contents has been created with a built-in link to take you directly to it—simply hover over the line item and Ctrl and Click to go directly to the page.

Commonly Used Web Sites

Web site addresses and links to external resources are provided as a public service and do not imply endorsement by the Washington State Department of Health.

This is not a complete list of entities noted in the CYSHCN Manual. Web site address and links are subject to change.

CYSHCN Program:

<http://www.doh.wa.gov/YouandYourFamily/InfantsChildrenandTeens/HealthandSafety/ChildrenwithSpecialHealthCareNeeds.aspx>

The CYSHCN Program web site includes categories for:

- Current Collaborative Activities
- Our Partners
- CYSHCN Communication Network
- CYSHCN Publications
- Referrals for Services
- Autism

CYSHCN Manual:

<http://www.doh.wa.gov/ForPublicHealthandHealthcareProviders/PublicHealthSystemResourcesandServices/Funding/ConsolidatedContracts/FormsReportsandProgramInformation.aspx>

CYSHCN County and State Specific Data:

<http://www.doh.wa.gov/DataandStatisticalReports/DiseasesandChronicConditions/ChildrenwithSpecialHealthCareNeeds.aspx>

Section 1000

Americans with Disabilities Act

<http://www.ada.gov/>

Department of Health and Human Services

<http://www.hhs.gov/about/>

Individuals with Disabilities Education Act

<http://idea.ed.gov/>

Health Resources and Services Administration

<http://www.hrsa.gov/index.html>

Healthy People 2020

<https://www.healthypeople.gov/>

Maternal Child Health Bureau

<http://mchb.hrsa.gov/>

Title V

<http://mchb.hrsa.gov/maternal-child-health-initiatives/title-v-maternal-and-child-health-services-block-grant-program>

Section 2000

Revised Code of Washington

<http://apps.leg.wa.gov/rcw/>

Washington Administrative Code

<http://apps.leg.wa.gov/wac/>
Washington State Legislative Home Page
<http://www.leg.wa.gov/legislature>

Section 3000

Department of Health

<http://www.doh.wa.gov>

Local Health Jurisdiction

<http://www.doh.wa.gov/AboutUs/PublicHealthSystem/LocalHealthJurisdictions.aspx>

Section 4000

DOH Health Professionals

<http://www.doh.wa.gov/AboutUs/ProgramsandServices/HealthSystemsQualityAssurance.aspx>

Section 5000

Health Care Authority

<http://www.hca.wa.gov/Pages/index.aspx>

<http://www.hca.wa.gov/medicaid/Pages/index.aspx>

Newborn Screening

<http://www.doh.wa.gov/YouandYourFamily/InfantsChildrenandTeens/NewbornScreening.aspx>

Section 6000

Washington Administrative Code

<http://apps.leg.wa.gov/wac/>

Newborn Screening Program

<http://www.doh.wa.gov/YouandYourFamily/InfantsChildrenandTeens/NewbornScreening.aspx>

Health Care Authority (HCA)

<http://www.hca.wa.gov/Pages/index.aspx>

<http://www.hca.wa.gov/medicaid/Pages/index.aspx>

<http://www.hca.wa.gov/medicaid/billing/pages/bi.aspx>

<https://www.wahbexchange.org/new-customers/financial-help/individuals-families-cost-calculator/>

WIC Nutrition Program

<http://www.doh.wa.gov/YouandYourFamily/WIC.aspx>

Section 7000

WithinReach

<http://www.withinreachwa.org/>

Department of Children, Youth and Families

<http://www.dcyf.wa.gov/>

ParentHelp123

<http://www.parenthelp123.org/>

Medical Home Partnerships Project

<https://medicalhome.org/>

Bright Futures

<https://medicalhome.org/>

CYSHCN Acronyms
(Key terms used in this document)

ACA	Affordable Care Act
ACE	Adverse Childhood Experience(s)
ACH	Accountable Communities of Health
ADA	Americans with Disabilities Act
ASC	Access, Systems and Coordination Section (DOH)
ASK	Answers for Special Kids Toll-Free Hotline (WithinReach)
CHDD	Center on Human Development and Disability at University of Washington
CHIF	CYSHCN Child Health Intake Form
CHIP	Children's Health Insurance Program
CYSHCN	Children and Youth with Special Health Care Needs Program (DOH)
DCYF	Department of Children, Youth and Families (Washington State)
DDA	Developmental Disabilities Administration (DSHS)
DHHS	U.S. Department of Health and Human Services (federal)
DOH	Department of Health (Washington State)
DSHS	Department of Social and Health Services (Washington State)
DX/TX	CYSHCN Diagnostic and Treatment Allocations/Funds
EHA	Education of Handicapped Act
ESIT	Early Support for Infant Toddler Program (DCYF)
FFS	Fee-For-Service
FFY	Federal Fiscal Year
FPL	Federal Poverty Level
FRC	Family Resources Coordinator (ESIT/DCYF)
HCA	Health Care Authority (Washington State)
HIPAA	Health Insurance Portability and Accountability Act
HRSA	Health Resources and Services Administration (federal)
HSA	Health Services Authorization Form
HST	Healthy Starts and Transitions Unit (DOH)
IDEA	Individuals with Disabilities Education Act
IEP	Individualized Education Program
IHI	Institute for Healthcare Improvement
LEND	Leadership Education in Neurodevelopmental Disabilities
LHJ	Local Health Jurisdiction(s)
MCH	Maternal and Child Health

MCHB Maternal and Child Health Bureau (federal)
MCHBG Maternal and Child Health Block Grant
MCO Managed care organization(s) – Medicaid
MFRB Maxillofacial Review Board(s)
NDC Neurodevelopmental Center(s)
NICU Neonatal Intensive Care Unit
OFCHI Office of Family and Community Health Improvement (DOH)
OSPI Office of Superintendent for Public Instruction (Washington State)
PCH Prevention and Community Health Division (DOH)
PL Public Law
PKU Phenylketonuria
RCW Revised Code of Washington
RD Registered Dietitian
SICC State Interagency Coordinating Council
TRICARE Military managed-care health system (previously CHAMPUS)
UW University of Washington
WA Washington State
WAC Washington Administrative Code
WIC Women, Infants and Children Nutrition Program (DOH)

CHILDREN AND YOUTH WITH SPECIAL HEALTH CARE NEEDS (CYSHCN) LOCAL AGENCY COORDINATORS AND SUPPORT STAFF

(Street addresses in parenthesis are only used for package deliveries by carriers other than the U.S. Postal Service.)

Please review for edits and respond to Christy Polking at (360) 236-3571 or email christy.polking@doh.wa.gov

County	Contact/Address	Communications
Adams County Health Department www.co.adams.wa.us	Ashley Yerxa, CSHCN Coordinator 108 West Main Ritzville, Washington 99169	509-659-3317 509-659-3315 (main #) FAX 509-659-4109 Email: ashleyy@co.adams.wa.us
Asotin County Health District www.ac-hd.org	Lora Gittins, Co-CSHCN Coordinator Sundie Hoffman, Co-CSHCN Coordinator PO Box 306 (102 1 st Street) Asotin, Washington 99402	509-552-4122 509-552-3343 FAX 509-243-3345 Email: lgittins@ac-hd.org shoffman@ac-hd.org
Benton-Franklin Health District www.bfhd.wa.gov	Carla Prock, RN, BSN, CSHCN Coordinator 7102 W Okanogan Place Kennewick, Washington 99336	509-460-4225 FAX 509-460-4515 Email: carlap@bfhd.wa.gov
Chelan-Douglas Health District www.cdhd.wa.gov/ParentandChildHealthServices.htm	Carol McCormick, Nursing Director/Associate Administrator, CSHCN Coordinator 200 Valley Mall Parkway East Wenatchee, Washington 98802	509-886-6423 FAX 509-886-6478 Email: Carol.McCormick@cdhd.wa.gov
Clallam County Department of Health & Human Services	Tina Moody, CSHCN Coordinator Post Office Box 1612 (140 C Street) Forks, Washington 98331 <i>Main Health Department:</i> 111 E 3 rd Street Port Angeles, Washington 98362	360-374-3121 FAX 360-374-5418 Email: tmoody@co.clallam.wa.us
Clark County Public Health	Connie Callahan, RN, CSHCN Coordinator Jan Schmalenberger, Admin. Support Post Office Box 9825 (1601 E 4 th Plain Road, 3 rd Floor, Zip 98661) Vancouver, Washington 98666-8825	360-397-8000, ext. 7400 360-397-8440 FAX 360-397-8442 Email: connie.callahan@clark.wa.gov jan.schmalenberger@clark.wa.gov
Columbia County Public Health District	Estasia Collins, CSHCN Coordinator 270 E Main Street Dayton, Washington 99328	509-382-2181 FAX 509-382-2942 Email: estasia_collins@co.columbia.wa.us

County	Contact/Address	Communications
Cowlitz County Health Department	Michelle Ashby, RN, BSN, Community Health Manager	360-414-5599.1.6417
	Vacant, RN, Maternal Child Health & Communicable Disease Coordinator Gayle Reid, Admin. Support 1952 9 th Avenue Longview, Washington 98632	360-414-5599.1.6437 360-414-5599.1.6424 FAX 360-425-7531 Email: ashbym@co.cowlitz.wa.us coalmanh@co.cowlitz.wa.us ReidG@co.cowlitz.wa.us
Garfield County Health District	Elizabeth Stringer, CSHCN Coordinator Post Office Box 130 (121 South 10 th Street) Pomeroy, Washington 99347	509-843-3412 FAX 509-843-1935 Email: EStringer@co.garfield.wa.us
Grant County Health District	Maria Vargas, Public Health Educator / CSHCN Coordinator 1038 W Ivy (Suite 1) Moses Lake, Washington 98837	509-766-7960, ext. 19 FAX 509-766-6519 Email: mvargas@granthealth.org
Grays Harbor County Public Health and Social Services	Erin Schreiber, CSHCN Coordinator 2109 Sumner Avenue Aberdeen, Washington 98520	360-500-4065 FAX 360-533-6272 Email: eschreiber@co.grays-harbor.wa.us
Island County Public Health Department	Melanie Davis, CSHCN Coordinator Post Office Box 5000 (410 North Main Street) Coupeville, Washington 98239	360-678-8246 FAX 360-679-7347 Email: m.davis@co.island.wa.us
	Janet McWatt, RN, CSHCN Coordinator 127 N East Camano Drive, Suite B Camano Island, Washington 98282	360-678-8247 Email: janetm@co.island.wa.us
Jefferson County Public Health	Julia Danskin, RN, CSHCN Coordinator 615 Sheridan Port Townsend, Washington 98368	360-385-9420 FAX 360-385-9401 Email: jdanskin@co.jefferson.wa.us
Kitsap Public Health District	Mindi Outhwaite, RN, CSHCN Coordinator Katie Wagner, Admin. Support 345 6 TH Street, Suite 300 Bremerton, Washington 98337-1866	360-728-2235 (main switchboard) FAX 360-813-1382 (confidential fax) Email: mindy.outhwaite@kitsappublichealth.org katie.wagner@kitsappublichealth.org
Kittitas County Public Health	Michele Cawley, RN, Program Manager Community Health of Central Washington 607 East Mountain View Avenue Ellensburg, Washington 98926	509-962-1414, ext. 3905 Cell 509-306-1740 FAX 509-962-1408 Email:
	<i>Main Health Department:</i> 507 North Nanum Street, Suite 102 Ellensburg, Washington 98926	michele.cawley@chcw.org

County	Contact/Address	Communications
Klickitat County Health Department	Melissa Hunziker, RN, Co-CSHCN Coordinator Laurel Pritchard, RN, Co-CSHCN Coordinator Angie Kaley, Admin. Support 228 West Main Street, MS: CH-14 Goldendale, Washington 98620	Goldendale 1-888-291-3521 509-773-2365 509-773-2490 FAX 509-773-5991 Email: melissah@klickitatcounty.org laurelp@klickitatcounty.org angiek@klickitatcounty.org
	-and-	
	Jennifer Yost, RN, Co-CSHCN Coordinator Post Office Box 159 (501 NE Washington Street) White Salmon, Washington 98672	White Salmon 1-888-267-1199 509-493-6207 FAX 509-493-4025 Email: jennifery@klickitatcounty.org
Lewis County Public Health and Social Services	Sara Sons, CSHCN Coordinator 360 NW North Street Chehalis, Washington 98532	360-740-1418 FAX 360-740-1472 Email: sara.sons@lewiscountywa.gov
Lincoln County Health Department	Jolene Erickson, RN Director/CSHCN Coordinator 90 Nichols Street Davenport, Washington 99122	509-215-1025 FAX 509-725-1014 Email: jerickson@co.lincoln.wa.us
Mason County Public Health	Elizabeth Custis, RN, CSHCN Coordinator Audrey O'Connor, RN, Co-CSHCN Coordinator 415 N 6 th Street, LL Building 8 Shelton, Washington 98584	360-427-9670, ext. 407 Cell: 360-490-2345 360-427-9670, ext. 406 FAX 360-427-7787 Email: elizac@co.mason.wa.us AOConnor@co.mason.wa.us
N.E. Tri-County Health District Ferry County	Judy Hutton, PHN, CSHCN Coordinator/Community Health Director Post Office Box 584 (147 North Clark) Republic, Washington 99166	509-563-8044 FAX 509-775-2858 Email: jhutton@netchd.org
N.E. Tri-County Health District Pend Oreille County	Jan Steinbach, PHN, CSHCN Coordinator/Community Health Supervisor 605 Highway 20 Newport, Washington 99156	509-447-3131 (main #) FAX 509-447-5644 Email: jsteinbach@netchd.org
N.E. Tri-County Health District Stevens County	Judy Hutton, PHN Community Health Director	509-684-2262 (main #)
www.netchd.org	Vacant, CSHCN Coordinator 240 East Dominion Street Colville, Washington 99114	509-684-2623 FAX 509-684-8506 Email: jhutton@netchd.org
Okanogan County Public Health	Crisha Warnstaff, RN, CSHCN Coordinator Post Office Box 231 (1234 South Second) Okanogan, Washington 98840	509-422-7394 FAX 509-422-7152 Email: lwarnstaff@co.okanogan.wa.us

County	Contact/Address	Communications
Pacific County Public Health and Human Services	Kelli Buchanan, Family Support Navigator / Co- CSHCN Coordinator Post Office Box 26 (1216 W Robert Bush Drive) South Bend, Washington 98586	360-875-9339 FAX 360-875-8323 Email: kbuchanan@co.pacific.wa.us
	-and-	
	Shalon Jarrell, LPN, Co-CSHCN Coordinator 7013 Sandridge Road Long Beach, Washington 98631	360-642-9300, ext. 2628 Email: sjarrell@co.pacific.wa.us
San Juan Health and Community Services	Kristen Rezabek, MS, RD, CD, CDE, CSHCN Coordinator	360-370-7518
	Shelly Easterday, Office Manager Post Office Box 607 (145 Rhone Street) Friday Harbor, Washington 98250-0607	FAX 360-378-7036 Email: kristenr@sanjuanco.com shellye@sanjuanco.com
Public Health – Seattle & King County	Rebecca Benson, RN, CSHCN Coordinator	206-263-1244
www.kingcounty.gov/healthservices/health/child/cshcn.aspx	Shirley Dickerson, Functional Analyst 401 Fifth Avenue; Suite 1000 Seattle, Washington 98104	206-477-7261
		Preferred contact #: 206-296-4610 (main line)
		FAX 206-296-4679 Email: rebecca.benson@kingcounty.gov shirley.dickerson@kingcounty.gov
Skagit County Public Health Department	Jennifer Walton, RN, Child & Family Health Manager	360-416-1529
	Emily Molina, Community Health Worker 700 South Second, Room 301 Mount Vernon, Washington 98273	360-416-1523 FAX 360-416-1501
		Email: jennis@co.skagit.wa.us emilym@co.skagit.wa.us
Skamania County Health Department	Amanda Cole, RN, CSHCN Coordinator Post Office Box 369 (710 SW Rock Creek Drive) Stevenson, Washington 98648	509-427-3883 FAX 509-427-0188
		Email: cole@co.skamania.wa.us
Snohomish Health District	Gift-Noelle Wango, RN, CSHCN Coordinator Sarah de Jong, Program Specialist 3020 Rucker Avenue, #203 Everett, Washington 98201	425-252-5443 425-339-8652 FAX 425-339-5255
www.snohd.org		Email: gwango@snohd.org sdejong@snohd.org

County	Contact/Address	Communications
Spokane Regional Health District www.srhd.org/services/nursing.asp	Colleen O'Brien, RN Manager, CSHCN Program Melissa Charbonneau, RN, Public Health Nurse, Education Coordinator 1101 West College Avenue (Suite 240) Spokane, Washington 99201	509-324-1657 509-324-1665 FAX 509-324-1699 Email: cbobrien@srhd.org mcharbonneau@srhd.org
	Julie McGraw, RN Eastern Washington Maxillofacial Coordinator Providence Sacred Heart Maxillofacial Program PO Box 2555 (101 W Eighth Avenue) Spokane, Washington 99220-2555	509-474-3106 FAX 509-474-2801 Email: julie.mcgraw@providence.org
Tacoma-Pierce County Health Department	Kate Phillips, RN, CSHCN Coordinator Mary Jo Schatz, Admin Support and Intake 3629 South "D" Street (MS: 1100) Tacoma, Washington 98418-6831	253-798-4576 Cell 253-954-6773 253-798-6490 FAX 253-798-4599 Email: kphillips@tpchd.org mschatz@tpchd.org
	Beth Kennedy, RN, BSN SW Washington Maxillofacial Coordinator Mary Bridge Children's Health Center 1220 Division Avenue, MS: 1220-1-SP Tacoma, Washington 98403	253-403-1559 FAX 253-627-5004 Email: bkennedy@multicare.org
Thurston County Public Health & Human Services www.co.thurston.wa.us/health/personalhealth/womenchildren/CSHCN.html	Bonnie Peterson, RN, CSHCN Coordinator 412 Lilly Road NE (MS: 0947) Olympia, Washington 98506-5132	360-867-2543 FAX 360-867-2601 Email: petersb@co.thurston.wa.us
Wahkiakum County Health and Human Services	Danelle Barlow, CSHCN Coordinator Post Office Box 696 (64 Main Street) Cathlamet, Washington 98612	360-795-6207, ext. 204 FAX 360-795-6143 Email: barlowd@co.wahkiakum.wa.us
Walla Walla County Health Department	Amanda Hinrichs, MCH/CSHCN Coordinator Post Office Box 1753 (314 West Main) Walla Walla, Washington 99362-0346	509-524-2650 (Main #) 509-524-2642 FAX 509-524-2642 Email: AHinrichs@co.walla-walla.wa.us
Whatcom County Health Department	Judy Ziels, Public Health Nurse Supervisor 1500 North State Street Bellingham, Washington 98225	360-778-6130 FAX 360-778-6104 Email: JZiels@whatcomcounty.us

County	Contact/Address	Communications
Whitman County Health Department	Diane Heaslet, MCH/CSHCN Coordinator 1205 SE Professional Mall Boulevard (Suite 203) Pullman, WA 99163	509-509-332-6752, ext. 5372 FAX 509-334-4517 Email: Dianne.heaslet@whitmancounty.net
	-and- 310 N Main Street (Suite 108) Colfax, Washington 99111	
	Meghan Johns, Admin Support/ WIC, Immunizations and CSHCN Pullman (Monday and Thursday) 1205 SE Professional Mall Boulevard (Suite 203) Pullman, Washington 99163	509-332-6752 (Pullman) FAX 509-334-4517 Email: meghan.johns@whitmancounty.net
	Colfax (Friday) 310 N Main Street (Suite 108) Colfax, Washington 99111	
Children's Village - Yakima	Cindy Carroll Child Health Services Manager	509-574-3228
	Tracie Hoppis Child and Family Services Supervisor Cathy Buchanan, Cleft Lip and Palate Program Coordinator	509-574-3263 509-574-3268
	Carrie Schilperoort, Fiscal Coordinator Amanda McMurray, CSHCN Program Support 3801 Kern Road Yakima, Washington 98902	509-574-3201 509-574-3283 FAX 509-574-3210 Email: cindycarroll@yvmh.org traciehoppis@yvmh.org cathybuchanan@yvmh.org carrieschilperoort@yvmh.org amandamcmurray@yvmh.org

CHILDREN AND YOUTH WITH SPECIAL HEALTH CARE NEEDS
MAXILLOFACIAL TEAMS

Maxillofacial Teams are located in Spokane, Tacoma, Yakima, and Portland, Oregon. Children are usually seen by the team serving their area of residence, however parents may choose to continue to be seen by the team initially providing service if they move to another region in the state.

- The Northwest Washington Region includes the following counties:

Clallam	King	Skagit
Island	Kitsap	Snohomish
Jefferson	San Juan	Whatcom

The CYSHCN maxillofacial coordinator for this region is:

Rebecca Benson, RN
CSHCN Coordinator
Public Health Seattle & King County
401 Fifth Avenue; Suite 1000
Seattle, Washington 98104
206-296-4610
FAX 206-296-4679
Email: rebecca.benson@kingcounty.gov

- Spokane's Inland Empire Maxillofacial Team serves counties in the East Region:

Adams	Ferry	Pend Oreille	Whitman
Asotin	Garfield	Spokane	
Columbia	Lincoln	Stevens	

The team coordinator for this region is:

Julie McGraw, RN
Providence Sacred Heart Maxillofacial Program
101 West 8th Avenue
(PO Box 2555, Spokane, WA 98220-2555)
Spokane, Washington 99204
509-474-3106
FAX 509-474-2801
Email: julie.mcgraw@providence.org

- Tacoma’s Southwest Washington Maxillofacial Team serves counties in the Southwest Region:

Clark	Lewis	Pierce	Wahkiakum
Cowlitz	Mason	Skamania	
Grays Harbor	Pacific	Thurston	

The team coordinator for this region is:

Beth Kennedy, RN, BSN
Mary Bridge Children’s Hospital & Health Center
PO Box 5299 (MS: 316L-1-CHN)
311 South “L” Street
Tacoma, Washington 98415-0299
253-403-1559
FAX 253-403-4700
Email: bkennedy@multicare.org

- Yakima’s Central Washington Cleft Palate team serves counties in the Central Region:

Benton	Franklin	Klickitat	Yakima
Chelan	Grant	Okanogan	
Douglas	Kittitas	Walla Walla	

The team coordinator and case manager for this region is:

Cathy Buchanan, MSW, Case Manager
Children’s Village
3801 Kern Road
Yakima, Washington 98902
509-574-3260
FAX 509-574-3210
Email: cathy.buchanan@yvmh.org

- The CYSHCN maxillofacial coordinator for the Northwest Region works with Children's Craniofacial Center staff at Seattle Children's Hospital to serve children in the Northwest Region. The Craniofacial Center director is Michael Cunningham, MD, PhD, surgical director is Richard Harper, MD, MS, and nurse clinician is Dawn Leavitt, RN-BC, BSN. They may be reached at:

Children's Craniofacial Center
Seattle Children's Hospital
4800 Sand Point Way NE
Seattle, Washington 98105
206-987-2208
FAX (206) 987-3824
Toll free: 1-866-987-2000
Email: dawn.leavitt@seattlechildrens.org
Website: <http://www.seattlechildrens.org/clinics/craniofacial>

- Portland serves children residing in Southwest Washington through:

Cleft Palate and Craniofacial Program
Oregon Health and Science University
Child Development and Rehabilitation Center
707 SW Gaines Street
Portland, Oregon 97239
503-346-0640
Toll-free: 877-346-0640
FAX 503-346-0645
Website: <https://www.ohsu.edu/xd/health/child-development-and-rehabilitation-center/clinics-and-programs/cdrc-portland-programs/cleft-palate-craniofacial/>

Neurodevelopmental Centers

Birth to Three Developmental Center

Maryanne Barnes, Executive Director

mbarnes@birthtothree.org

35535 6th Place SW (physical address)

PO Box 24269 (mailing address)

Federal Way, Washington 98093-1269

PH No. (253) 874-5445

FX No. (253) 874-0687

Web www.birthtothree.org

Boyer Children's Clinic

Michael Stewart, Executive Director

Mike.Stewart@boyercc.org

Boyer Montlake Location

1850 Boyer Avenue East

Seattle, Washington 98112

Boyer Magnuson Location

7821 62nd Avenue NE, Suite 202

Seattle, Washington 98115

PH No. (206) 325-8477, ext. 3514

FX No. (206) 323-1385

Web www.boyercc.org

Children's Developmental Center

Cathryn Tames, Executive Director

cathrynt@childrensdc.org

1549 Georgia Avenue SE

Richland, Washington 99352

PH No. (509) 735-1062

FX No. (509) 737-8492

Web

www.childrensdevelopmentalcenter.org

Children's Therapy Center

Barry Gourley, Chief Executive Officer

Jodi VanVleet, Program Director

barryg@ctckids.org

jodi@ctckids.org

10811 SE Kent Kangley Road

Kent, Washington 98030

PH No. (253) 216-0770

FX No. (253) 854-7025

Web www.ctckids.org

ChildStrive

Jim Welsh, Executive Director

Mary Cline-Stively, Program Director

jim.welsh@childstrive.org

mary.cline-stively@childstrive.org

14 East Casino Road

Everett, Washington 98208

PH No. (425) 353-5656, ext. 7140

FX No. (425) 513-2807

Web www.ChildStrive.org

Encompass Northwest

Kim Kanzler, Director, Pediatric Therapy Programs

kim.kanzler@encompassnw.org

1407 Boalch Avenue NW

North Bend, Washington 98045

PH No. (425) 888-3347

FX No. (425) 888-2010

Web encompassnw.org/

Holly Ridge Center Infant Toddler Program

Alicia Skelly, Program Director

askelly@hollyridge.org

5112 Northwest Taylor Road

Bremerton, Washington 98312

PH No. (360) 373-2536

FX No. (360) 373-4934

Web www.hollyridge.org

Innovative Services NW

Dena Strong, President/CEO

Susan Lehr, Director, Health Programs & Early Intervention

dstrong@innovativeservicesnw.org

slehr@innovativeservicesnw.org

9414 NE Fourth Plain Road

Vancouver, Washington 98662

PH No. (360) 892-5142 (Main Line)

FX No. (360) 823-2157

Web www.innovativeservicesnw.org

Kindering Center
Lisa Greenwald, Executive Director
Kathy Fortner, Director of Operations
lisa.greenwald@kinding.org
kathy.fortner@kinding.org
16120 NE 8th Street
Bellevue, Washington 98008
PH No. (425) 747-4004 (Main Line)
(425) 653-4306 (KF)
FX No. (425) 747-1069
Web www.kinding.org

Mary Bridge Children's Therapy Services
Angela Kitzmiller, Director
angela.kitzmiller@multicare.org
1220 Division Avenue (MS: 1220-1-SP)
(PO Box 5299, Tacoma, 98415)
Tacoma, Washington 98403
PH No. (253) 697-5200
FX No. (253) 627-5004
Web
www.multicare.org/marybridge/developmental-services/

**PeaceHealth Medical Group
PeaceHealth Children's Therapy**
Kris (Sandholm) Gaggero, Manager
KGaggero@PeaceHealth.org
4545 Cordata Parkway LL4
Bellingham, Washington 98225
PH No. (360) 752-5622
FX No. (360) 752-5624
Web
www.peacehealth.org/phmg/bellingham-lynden

Progress Center
Kara Harris, Executive Director
KHarris@theprogresscenter.org
1600 3rd Avenue
Longview, Washington 98632
PH No. (360) 425-9810
FX No. (360) 425-1053
Web www.theprogresscenter.org

**Providence Everett Medical Center
Providence Children's Center**
Jim Phillips, Manager
jim.phillips@providence.org
Pavilion for Women and Children
900 Pacific Avenue, First Floor
PO Box 1067
Everett, Washington 98206-1067
PH No. (425) 258-7069
FX No. (425) 258-7618
Web www.providence.org/everett/

Skagit Preschool and Resource Center
Amanda Sloan, Executive Director
amanda@sparckids.org
320 Pacific Place
Mount Vernon, Washington 98273
PH No. (360) 416-7570
FX No. (360) 416-7580
Web www.sparckids.org

**Skagit Valley Hospital
Children's Therapy Program**
Erin Kauai, Lead Therapist, Children's
Therapy Program
ekauai@skagitvalleyhospital.org
1415 Kincaid Street
Mount Vernon, Washington 98274
PH No. (360) 814-2699
FX No. (360) 814-5467
Web www.skagitvalleyhospital.org

**Spokane Guilds' School & Neuromuscular
Center**
Richard Boysen, Executive Director
dickb@guildschool.org
2118 W Garland Avenue
Spokane, Washington 99205
PH No. (509) 326-1651
FX No. (509) 326-1658
Web www.guildschool.org

Toddler Learning Center
Rene Denman, Executive Director
rene.d@tlcwhidbey.org
950 SE Regatta Drive, #101
PO Box 633
Oak Harbor, Washington 98277
PH No. (360) 679-1039, ext. 201
FX No. (360) 679-6646
Web www.tlcwhidbey.org

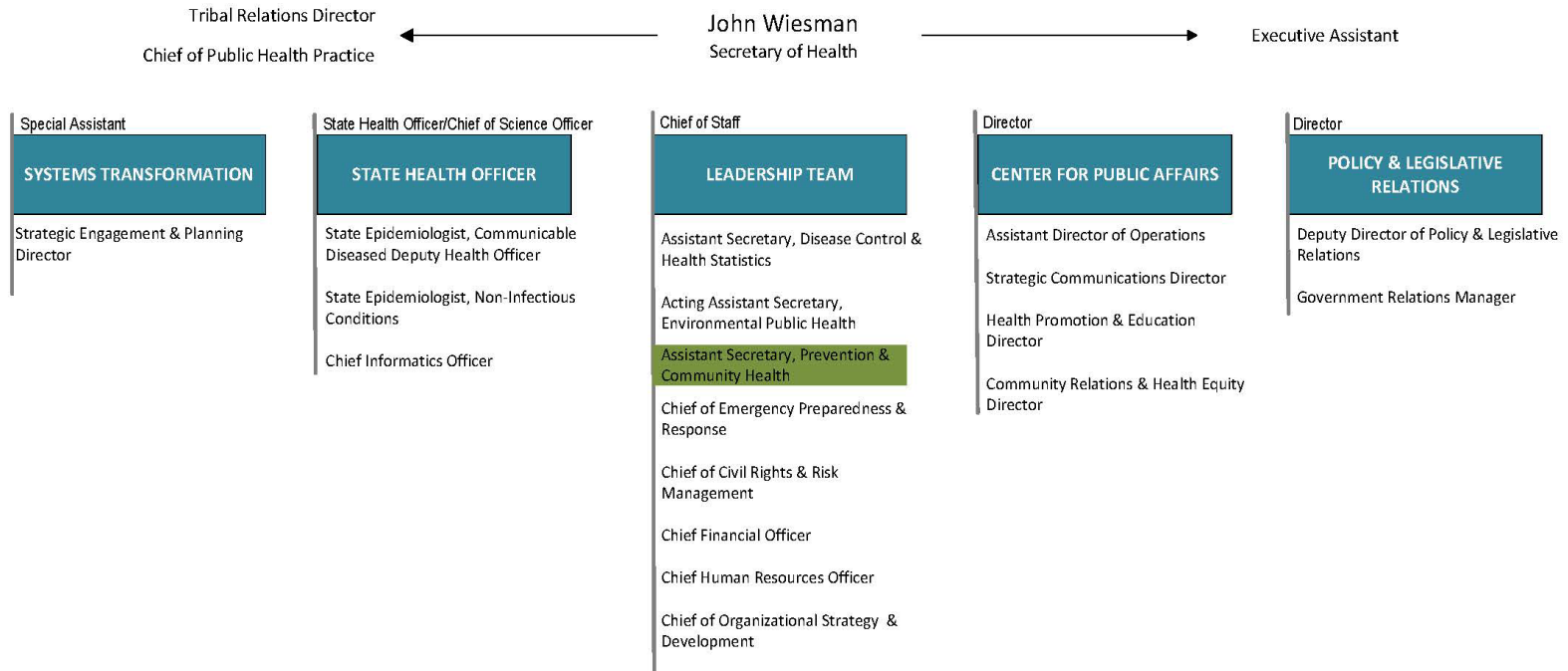
Valley Medical Center
Children's Therapy Department
Kari Tanta, PhD, OTR/L, FAOTA, Rehab
Manager

Kari_Tanta@valleymed.org
3600 Lind Avenue, Suite 160 (physical
address)
PO Box 50010 (mailing address)
Renton, Washington 98058
PH No. (425) 228-3440, ext. 3560
FX No. (425) 656-5075
Web
<http://www.valleymed.org/childrenstherapy>

Yakima Valley Memorial Association
Children's Village
Cindy Carroll, Child Health Services Manager

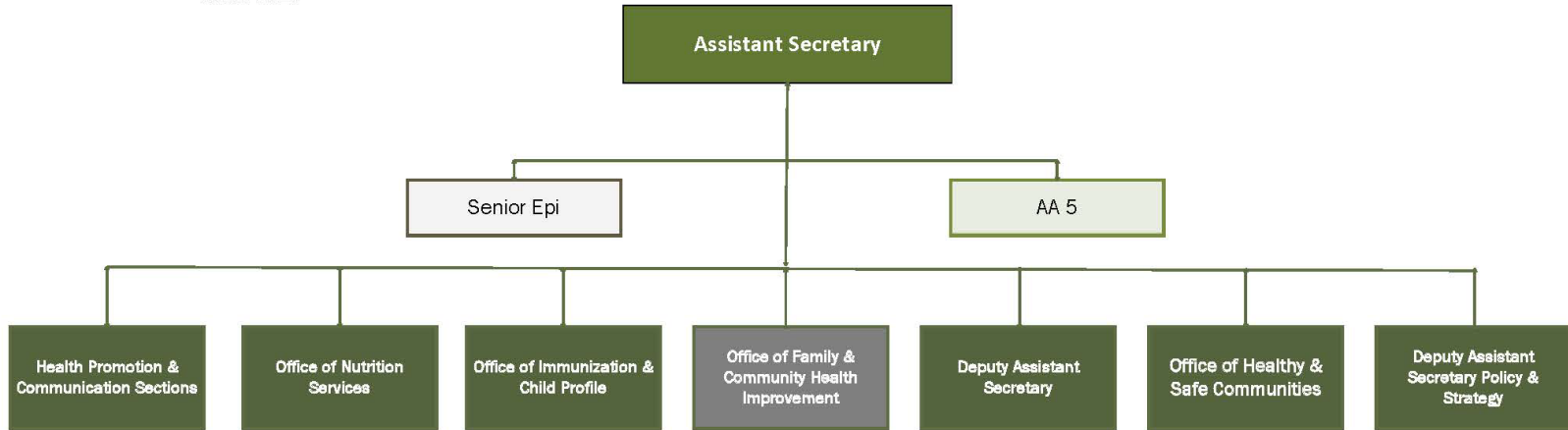
CindyCarroll@yvmh.org
3801 Kern Road
Yakima, Washington 98902
PH No. (509) 574-3228
FX No. (509) 574-3210
Web www.yakimachildreenvillage.org

Organizational Charts



March 2019

Washington State Department of Health
Division of Prevention and Community Health
Office of the Assistant Secretary
March 2019



March 2019

